

OWNER'S MANUAL

INSTALLATION, OPERATION, & PARTS

DUAL SUBMERGED SUCTION OUTLET FRAMES & COVERS

[Commonly called main drains]

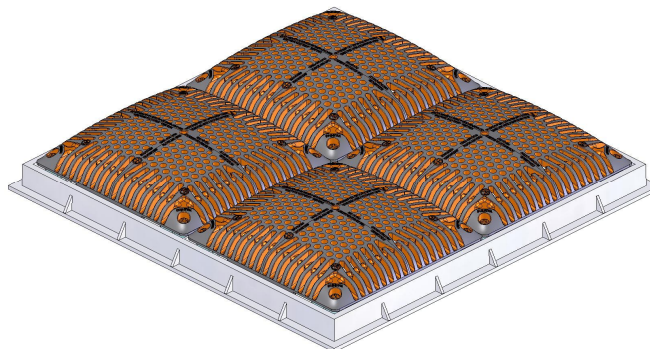
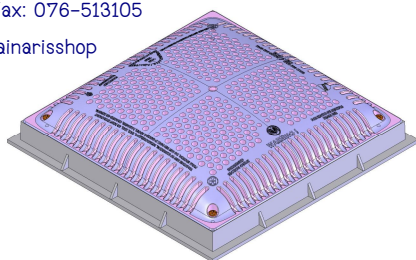
Contact us:

Chainaris Phuket Engineering Co., Ltd.


63/13 Moo.2, T.Vichit, A.Muang Phuket 83000


Tel: 076-513100-3 Fax: 076-513105


Line: @chainaris, @chainarissshop



Basic safety precautions should always be followed, including the following: Failure to follow instructions can cause severe injury and/or death.


 This is the safety-alert symbol. When you see this symbol on your equipment or in this manual, look for one of the following signal words and be alert to the potential for personal injury.

 **WARNING** warns about hazards that **could** cause serious personal injury, death or major property damage and if ignored presents a potential hazard.

 **CAUTION** warns about hazards that **will** or **can** cause minor or moderate personal injury and/or property damage and if ignored presents a potential hazard. It can also make consumers aware of actions that are unpredictable and unsafe.

The **NOTICE** label indicates special instructions that are important but not related to hazards.



 - **WARNING** - Read and follow all instructions in this owner's manual and on the equipment. Failure to follow instructions can cause severe injury and/or death.

IMPORTANT SAFETY INSTRUCTIONS

SAVE THESE INSTRUCTIONS FOR FUTURE REFERENCE.

USE ONLY HAYWARD GENUINE REPLACEMENT PARTS

▲ WARNING – Suction Entrapment Hazard.

Suction in suction outlets and/or suction outlet covers which are, damaged, broken, cracked, missing, or unsecured can cause severe injury and/or death due to the following entrapment hazards:



Hair Entrapment- Hair can become entangled in suction outlet cover.



Limb Entrapment- A limb inserted into an opening of a suction outlet sump or suction outlet cover that is damaged, broken, cracked, missing, or not securely attached can result in a mechanical bind or swelling of the limb.

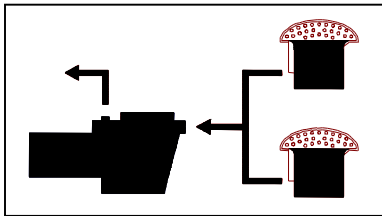


Body Suction Entrapment- A negative pressure applied to a large portion of the body or limbs can result in an entrapment.



Evisceration/ Disembowelment Entrapment- A negative pressure applied directly to the intestines through an unprotected suction outlet sump or suction outlet cover which is, damaged, broken, cracked, missing, or unsecured can result in evisceration/ disembowelment entrapment.

Mechanical Entrapment- There is potential for jewelry, swimsuit, hair decorations, finger, toe or knuckle to be caught in an opening of a suction outlet cover resulting in mechanical entrapment.



To Reduce the risk of Entrapment Hazards:

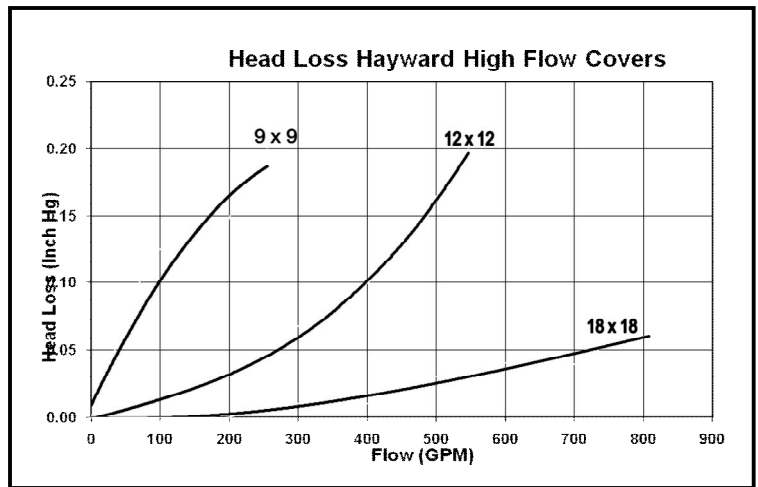
- A minimum of two functioning suction outlets per pump must be installed. Suction outlets in the same plane (i.e. floor or wall), must be installed a minimum of three feet (3') [.94 meter] apart, as measured from suction pipe center to suction pipe center. (See Diagram 1 below). If suction outlets are to be located closer than three feet (3') [.94 meter] apart, they shall be located in different planes (i.e., one on the bottom, and one on the vertical wall, or one on each of two separate vertical walls.) (See Diagram 2)
- Dual suction fittings shall be placed in such locations and distances to avoid “dual blockage” by a user.
- Dual suction fittings shall not be located on seating areas or on the backrest for such seating areas.
- The maximum system flow rate shall not exceed the flow rating of any listed (per ASME/ANSI A112.19.8M-1987, ASME A112.19.8b-2009, APSP-7) suction outlet cover installed.
- Keep suction outlet components clear of debris, such as leaves, dirt, hair, paper and other material.
- Never use a Pool or Spa if any suction outlet component is damaged, broken, cracked, missing, or not securely attached.
- Prior to each use of the swimming pool and/or spa, observe and replace damaged, broken, cracked, missing, or not securely attached suction outlet components immediately.
- Remove pressure test plugs and/or plugs used in winterization of the pool/spa from the suction outlets.
- Two or more suction outlets per pump should be installed in accordance with latest APSP Standards and CPSC guidelines, follow all National, State, and Local codes applicable.
- Multiple layers of protection are available including installation of a vent pipe system, a gravity flow system, or a vacuum release system.
- Suction outlet components have a finite life, the cover/grate should be inspected frequently and replaced at least every seven years or if found to be damaged, broken, cracked, missing, or not securely attached.
- Do not exceed maximum flow rate stated on suction fitting.
- Only replace a pump with one with a similar flow curve, avoid a pump with a higher horsepower rating.
- To reduce the risk of body entrapment, installation of the field fabricated sumps must be such that the top of the mounted WG1031BHF cover is a minimum of 1 ½” above; and the top of the mounted WG1032BHF cover is a minimum of 1 13/16” above, the finished pool surface over an area larger than 40” on a diagonal.

RECOMMENDED SYSTEM SPECIFICATIONS:

**ACCEPTABLE PIPE SIZE FOR
MAXIMUM RECOMMENDED
SYSTEM FLOW RATE PER APSP-7
(6 FT/SEC IN THE BRANCH LINE)**

Pipe Size	Flow rate GPM	Pipe Size	Flow rate GPM
[mm]	[Liter/Min]	[mm]	[Liter/Min]
2 1/2"	90	4"	238
[75]	[340]	[100]	[900]
3"	138	6"	540
[90]	[522]	[90]	[2040]

CHART 1



WG1031BHF Suction Outlet Cover (Replacement sold as a WGX1031BHF) is rated for 224 GPM Wall Mounted or 264 GPM Floor Mounted for single or multiple suction outlet use. (9" x 9")

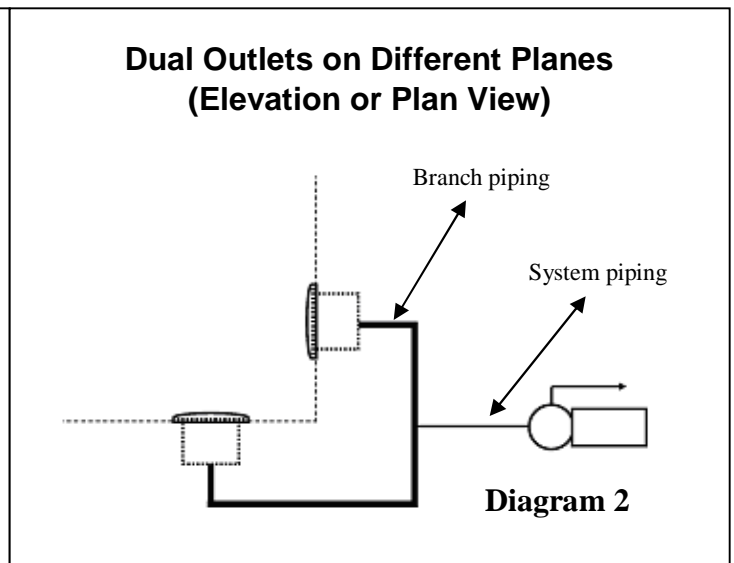
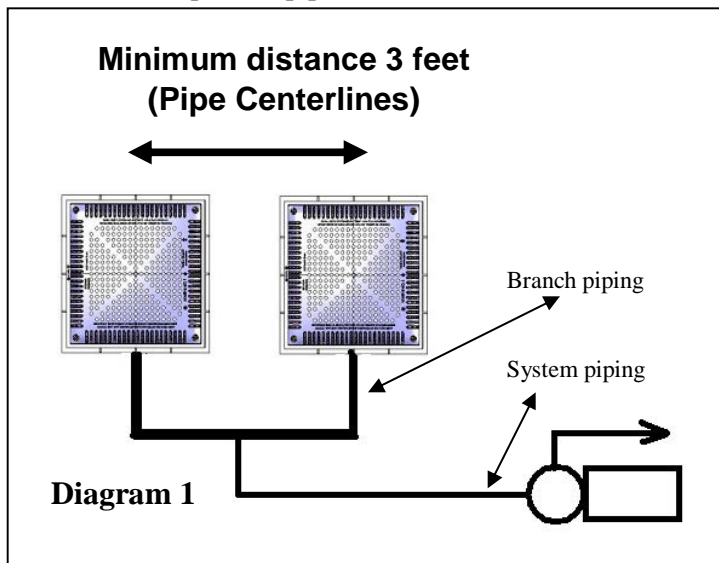
WG1032BHF Suction Outlet Cover (Replacement sold as a WGX1032BHF) is rated for 308 GPM Wall Mounted or 515 GPM Floor Mounted for single or multiple suction outlet use. (12" x 12")

WG1033BHF Suction Outlet Cover (Replacement sold as a WGX1033BHF) is rated for 732 GPM Wall Mounted or 812 GPM Floor Mounted for single or multiple suction outlet use (This is a package of four 9" x 9" covers and frames) (18" x 18")

In the event of one suction outlet being blocked, the remaining suction outlets serving that system shall have a flow rating capable of the full flow of the pump(s) for the specific suction system.

Example: In the System shown in **Diagram 1**, two (2) 12" Square (WG1032HFPAK2) suction outlet covers are selected and mounted on the floor. These covers are individually rated for 515 GPM. For a desired flow of 130 GPM, a minimum pipe size from **Chart 1** is selected at 3". At the desired flow of 130 GPM one cover could be partially blocked and the other suction outlet flow would be below the rated 515 GPM of the remaining suction outlet. Since there are two outlets flowing in normal operation, and the allowable velocity in the branch piping is only 3ft/sec with both outlets flowing, the branch piping would require 3" pipe size.

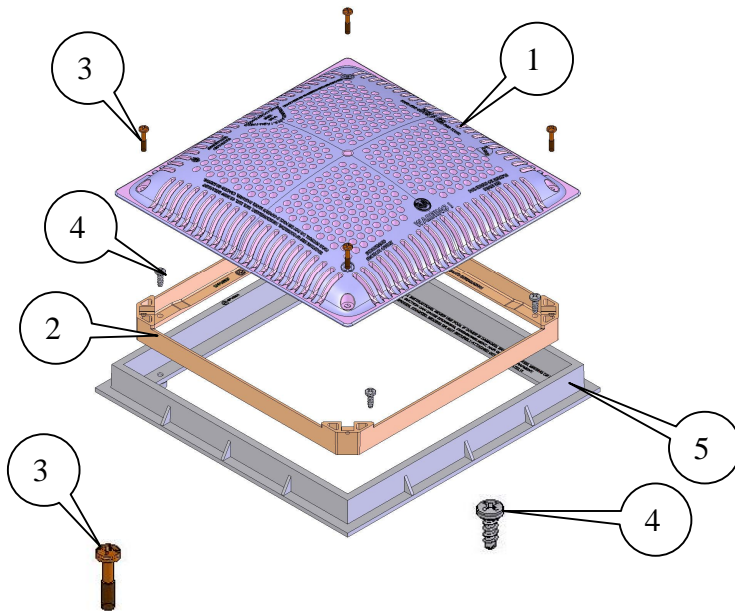
Example: In the System shown in **Diagram 2**, two (2) 12" Square (WG1032HFPAK2) suction outlet covers are selected and mounted, on one the floor and the other on the wall. These covers are individually rated for 515 GPM on the floor and 308 GPM when wall mounted. For a desired flow of 110 GPM, a minimum pipe size from **Chart 1** is selected at 3". At the desired flow of 110 GPM one cover could be partially blocked and the other suction outlet flow would be below the rated 308 GPM of the remaining suction outlet. Since there are two outlets flowing in normal operation, and the allowable velocity in the branch piping is only 3ft/sec with both outlets flowing, the branch piping would require 3" pipe size.



INSTALLATION INSTRUCTIONS: - Use a #2 Philips head Screwdriver.

NOTICE: When installing WG1032PAK2 or WG1033PAK2 refer to ASME A112.19.8b-2009 for the proper instructions on how to construct the field-fabricated sump. See Illustration on Page 7

• PARTS LISTS

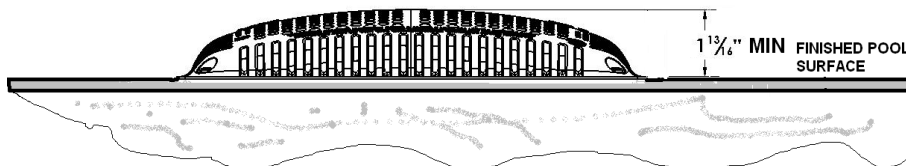


**WG1032HFPK2 12" x 12"
Frame and Cover Dual Pack**

Item	Description	Qty
1	Cover	2
2	Inner Frame	2 (Installed)
3	Machine Screw #10-24	8
4	#13-9 Self Taping Screw	8 (Installed)
5	Outer Frame	2

**WG1032BHF 12" x 12" Spare Part
Cover and Inner Frame**

Item	Description	Qty
1	Cover	1
2	Inner Frame	1
3	Machine Screw #10-24	4
4	#13-9 Self Taping Screw	4



▲ Warning – Suction Entrapment Hazard.

Suction in suction outlets and/or suction outlet covers which are installed in a small area and/or below the surrounding surface can cause severe injury or death due to body entrapment hazard.

•To reduce the risk of body entrapment, installation of the field fabricated sumps must be such that the top of the mounted cover is a minimum of 1 13/16" above the finished pool surface over an area larger than 40" on a diagonal.

When replacing a SP1032B grate with a replacement cover WG1032BHF, in an existing SP1032A Outer Frame (One that does not have inner frame installed), the grate is removed and discarded.

Locate the Inner Frame (Item 2) and using four (4) screw #13-9 x 5/8" (Item 4) **Secure** Inner Frame to Outer Frame. Should you not be able to secure the Inner Frame to the Outer Frame using the existing holes in the Outer Frame; drill four .149" (#25) diameter holes in the Outer Frame, using the holes in the Inner Frame to locate the holes to drill in the Outer Frame. Using four (4) screw #13-9 x 5/8" (Item 4) **Secure** Inner Frame to Outer Frame utilizing the four (4) new holes.

Locate the Cover (Item 1) and using four (4) #10-24 x 15/16" long screws (Item 3) Secure to the Inner Frame.

When replacing a WG1032B or a WG1032BHF cover, **Do NOT** remove the Inner Frame from the Square Frame unless it is damaged. The four screws in the corners of the cover are retained in the cover. New screws should be used whenever the cover is replaced.

USE ONLY HAYWARD GENUINE REPLACEMENT PARTS INCLUDING SCREWS.

INSTALLATION INSTRUCTIONS: - Use a #2 Philips head Screwdriver.

NOTICE: When installing WG1032HFPAK2 or WG1033HFPAK2 refer to ASME A112.19.8b-2009 for the proper instructions on how to construct the field-fabricated sump. See Illustration on Page 7

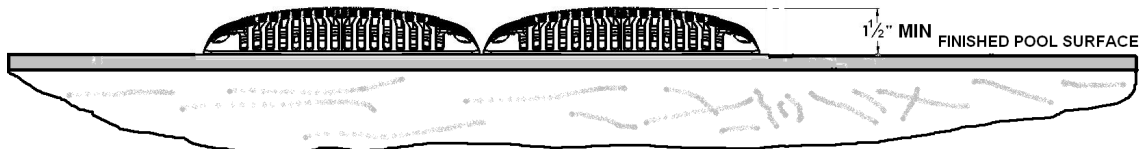
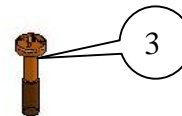
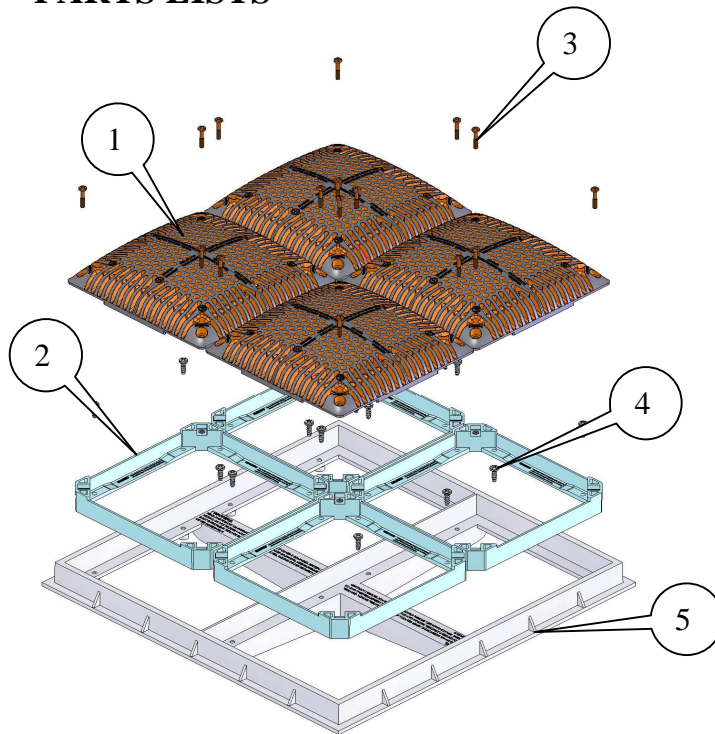
- PARTS LISTS**

**WG1033HFPAK2 18" x 18"
Frame and Cover Dual Pack**

Item	Description	Qty
1	Cover	8
2	Inner Frame	8 (Installed)
3	Machine Screw #10-24	32
4	#13-9 Self Taping Screw	32 (Installed)
5	Outer Frame	2

**WG1033BHF Spare Part
Cover and Inner Frame**

Item	Description	Qty
1	Cover	4
2	Inner Frame	4
3	Machine Screw #10-24	16
4	#13-9 Self Taping Screw	16



▲ Warning – Suction Entrapment Hazard.

Suction in suction outlets and/or suction outlet covers which are installed in a small area and/or below the surrounding surface can cause severe injury or death due to body entrapment hazard.

▪To reduce the risk of body entrapment, installation of the field fabricated sumps must be such that the top of the mounted cover is a minimum of 1 1/2" above the finished pool surface over an area larger than 40" on a diagonal.

When replacing a SP1031B grate with a replacement cover WG1033BHF, in an existing SP1033A Outer Frame (One that does not have inner frame installed), the grate is removed and discarded.

Locate the Inner Frame (Item 2) and using four (4) screw #13-9 x 5/8" (Item 4) **Secure** Inner Frame to Outer Frame. Should you not be able to secure the Inner Frame to the Outer Frame using the existing holes in the Outer Frame; drill four .149" (#25) diameter holes in the Outer Frame, using the holes in the Inner Frame to locate the holes to drill in the Outer Frame. Using four (4) screw #13-9 x 5/8" (Item 4) **Secure** Inner Frame to Outer Frame utilizing the four (4) new holes.

Locate the Cover (Item 1) and using four (4) #10-24 x 15/16" long screws (Item 3) **Secure** to the Inner Frame.

When replacing a WG1033B or a WG1033BHF cover, **Do NOT** remove the Inner Frame from the Square Frame unless it is damaged. The four screws in the corners of the cover are retained in the cover. New screws should be used whenever the cover is replaced.

USE ONLY HAYWARD GENUINE REPLACEMENT PARTS INCLUDING SCREWS.

HAYWARD® LIMITED WARRANTY

To Buyer, as original purchaser of this equipment, Hayward Pool Products, 620 Division Street, Elizabeth, New Jersey, warrants its products free from defects in materials and workmanship for a period of **ONE (1)** year from the date of purchase.

Parts which fail or become defective during the warranty period, except as a result of freezing, negligence, improper installation, use, or care, shall be repaired or replaced, at our option, without charge, within 90 days of the receipt of defective product, barring unforeseen delays.

To obtain warranty replacements or repair, defective components or parts should be returned, transportation paid, to the place of purchase, or to the nearest authorized Hayward service center. For further Hayward dealer or service center information, contact Hayward customer service department. No returns may be made directly to the factory without the express written authorization of Hayward Pool Products

Hayward shall not be responsible for cartage; removal and/or reinstallation labor or any other such costs incurred in obtaining warranty replacements.

The Hayward Pool Products warranty does not apply to components manufactured by others. For such products, the warranty established by the respective manufacturer will apply.

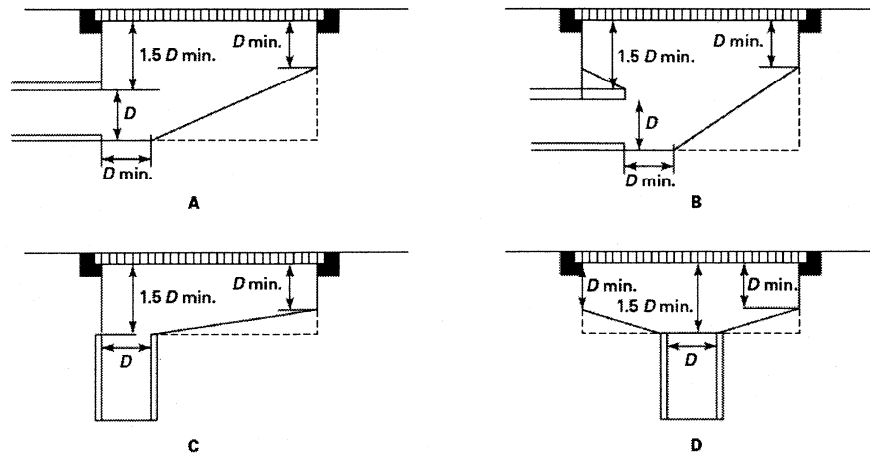
Some states do not allow a limitation on how long an implied warranty lasts, or the exclusion or limitation of incidental or consequential damages, so the above limitation or exclusion may not apply to you.

This warranty gives you specific legal rights, and you may also have other rights, which vary from state to state.

***Supersedes all previous publications.**

**Hayward Pool Products
620 Division Street
Elizabeth, NJ 07207**

Field built sumps must be built in accordance with the following:



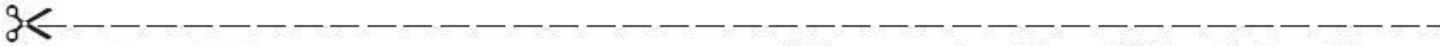
GENERAL NOTES:

- (a) D = inside pipe diameter.
- (b) All dimensions shown are minimums.
- (c) A broken line (-----) indicates suggested sump configuration.

<p>PRODUCT REGISTRATION (Retain For Your Records)</p>
<p>DATE OF INSTALLATION _____</p>

▲ Retain this Warranty Certificate (upper portion) in a safe and convenient location for your records.

DETACH HERE: Fill out bottom portion completely and mail within 10 days of purchase/installation, OR REGISTER YOUR WARRANTY ONLINE AT WWW.HAYWARDNET.COM



Dual Suction Outlet Set

Warranty Card Registration

Register your warranty on-line at www.haywardnet.com

Please print clearly.

First Name _____ Last Name _____

Street Address _____

City _____ State _____ Zip _____

Phone Number _____ Purchase Date _____

E-mail address _____

Serial Number (10-17 Digit Number)

--	--	--	--	--	--	--	--	--	--	--	--	--	--	--	--	--	--	--

Model Number _____

Pool Capacity _____ (U.S. Gallons)

Please include me on all e-mail communications regarding Hayward equipment or promotions.

Mail to: Hayward Industries, Inc. 620 Division Street, Elizabeth, NJ 07207, Attn: Warranty Dept. or Register your warranty on-line at www.haywardnet.com

Years pool has been in service
 1 year or less 2-3 4-5 6-10 11-15 >16

Purchased from _____
 Builder Retailer Pool Maintenance Internet/Catalog

Company name _____

Address _____

City _____ State _____ Zip _____

Phone _____

Type of Pool:
 Concrete/Gunite Vinyl Fiberglass Other _____

New Installation Replacement

Installation for:
 Inground Aboveground Spa

HAYWARD Pool Products
One source. Every pool.



USE ONLY HAYWARD GENUINE REPLACEMENT PARTS

Pomona, CA
Clemmons, NC

Nashville, TN

North Kingstown, RI
Oakville, ON, Canada

St. Vulbas, France
Wuxi, China

www.haywardpool.com