

Contact us:

Chainaris Phuket Engineering Co., Ltd.

63/13 Moo.2, T.Vichit, A.Muang Phuket 83000

Tel: 076-513100-3 Fax: 076-513105

Line: @chainaris, @chainarissshop



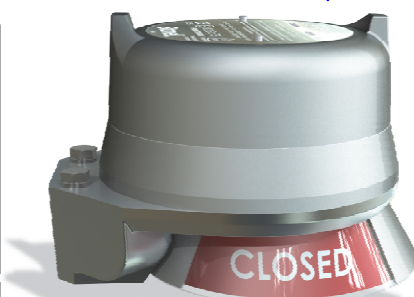
Rotating Ex d Limit Switch

Model: QT

The Rotating Limit Switch Box Assembly model QT is an accessory which enables remote and local valve position monitoring of BERMAD 400Y Torrent Deluge / Water Control Valves.

The low profile robust anodized and epoxy-coated aluminum housing makes it well-suited for use in corrosive, heavy wash down applications and harsh environments.

The limit switch box assembly is suitable for Zone 1 hazardous locations as per IEC/EC or Div. 1 to NEC/NEMA standards (see specification below). It is equipped with two SPDT type proximity switch sensors, hermetically-sealed, and activated by an internal magnetic target. The switch is equipped with Tungsten contacts, designed for moderate power applications and is electrically rated for 3 Amps at 125VAC or 240 VAC. The switch box incorporates a highly visible dual color visual position indicator.



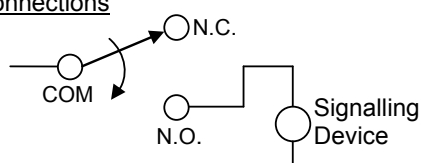
Installed on a BERMAD
TORRENT Deluge Valve
(for illustration only)



Specifications

- Switch Type:** 2xProximity SPDT, Hermetically-sealed

Electrical Connections



- Electrical ratings:** 3 A @ 125/220VAC, 100 W max, 2.0 W min
- Maximum voltage drop:** 0.1 V @ 10 mA, 0.5 V @ 100 mA
- Contacts composition:** Tungsten
- Enclosure protection ratings:** IP 67, NEMA 4, 4X and 6
- Temperature rating:** -40°C to 80°C (-40°F to 176°F)
- Approvals:** IEC-Ex and ATEX certified for Category II 2G Ex d IIC T6
Optional: Class I, Division 1, Groups A, B, C, D and Class II, Division 1, Groups E, F, G to NEC 500, NEMA 4, 4X, 7, 9
- Connections:** Switch box cable entries: 1x1/2" & 1x3/4" NPT

Materials of construction

- Housing:** Epoxy-coated anodized aluminum
- Visual Position Indicator:** Lexan® polycarbonate
- Elastomeric/seals:** NBR
- Drive shaft:** Stainless steel
- Drive bearing:** Bronze, oil impregnated
- Fasteners:** Stainless steel
- Wetted parts:** Stainless steel 316

Optional Materials

- Housing:** Stainless steel 316
- Wetted parts:** Monel, Ni.Al.Bronze

Please contact Bermad for other available specifications
Lexan® is a registered trademark of General Electric Corporation

Major Parts and Features

- Enclosure optimized for environment**
Suitable for use in various process environments
- Quick enclosure access**
Screw-on vapor tight cover allows quick enclosure access, saving valuable maintenance and set-up time.
- Pre-wired and labeled terminal strip**
Enables quick, convenient attachment of field wiring
- Maxx-Guard Proximity switches**
Hermetically-sealed suitable for safe signaling
- Easy to adjust quick set cams**
Touch and tune switch settings allows fast adjustments without the use of tools
- Dual shaft O-ring seals**
Shaft O-rings seal the drive bearing from both external corrosives and internal contaminants.
- Drive bearing assures long cycle life**
Oil impregnated bronze bearing maintains smooth operation and eliminates the potential for shaft seizure
- Clear Dual Color visual indication**
Highly Visual indication of valve status

