

Manual Emergency Release

Model B

The Model B Manual Emergency Release is a normally closed release device, used for manually opening a deluge valve.

It is connected to the BERMAD on-off deluge valves standard control trim and can also be mounted on a wet or dry pilot line for additional manual remote operation.

UL Listed for Special Fire Protection Systems ⁽¹⁾.



(for illustration only)

Available Models

- Model B: Standard
- Model BN: All Stainless Steel 316
- Model BM: Monel (for Seawater)

Materials of Construction

Model B - Standard

- Release Valve: Nickel Plated Brass
- Seals: PTFE
- Mounting plate: Stainless Steel 304 with epoxy marking
- Fittings: Stainless Steel 316
- Fastenings: Stainless Steel 316

Model BN - SS316 Construction

- Release Valve: Stainless Steel 316
- Seals: PTFE
- Mounting plate: Stainless Steel 316 with epoxy marking
- Fittings: Stainless Steel 316
- Fastenings: Stainless Steel 316

Model BM - Monel

- Release Valve: Monel 400
- Seals: PTFE
- Mounting plate: Stainless Steel 316 with epoxy marking
- Fittings: Monel 400
- Fastenings: Stainless Steel 316

Pressure Rating

- Water: 25 bar (365 psi)

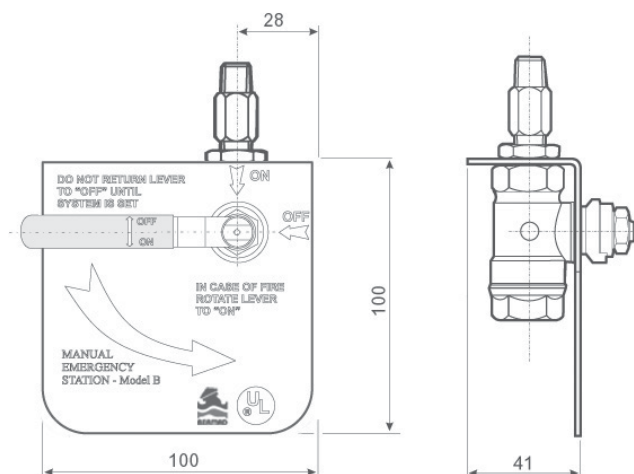
End Connections

- 1/2" NPT
- Male inlet, female outlet

Notes:

⁽¹⁾ Approved when installed on BERMAD Deluge valves

⁽²⁾ For more details about the release valve, see BERMAD publication "2-Way Ball Valve"



Contact us:

Chainaris Phuket Engineering Co., Ltd.

63/13 Moo.2, T.Vichit, A.Maung Phuket 83000

Tel: 076-513100-3 Fax: 076-513105

Line: @chainaris, @chainarissshop

