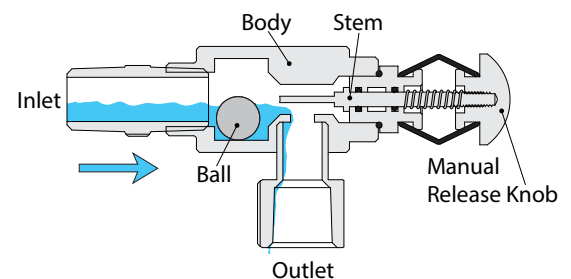
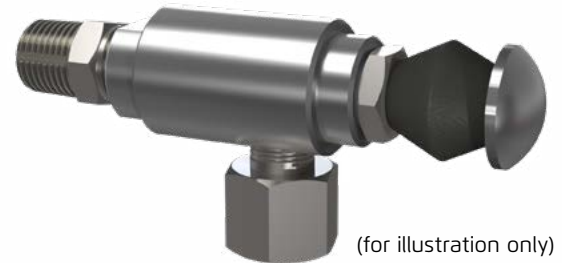


Automatic Drip Check

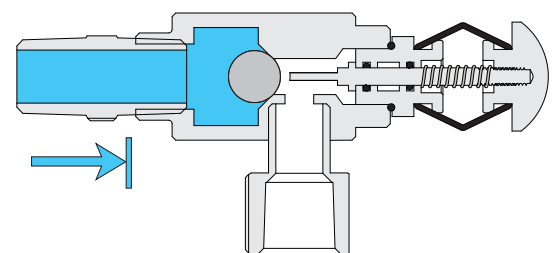
The Automatic Drip Check is used to drain system leakage or accumulated water/fluid from piping systems that need to be kept dry. It should be mounted horizontally at the lowest point of the piping system from which it drains.

The normally open Automatic Drip Check will immediately close upon a sudden high in flow and automatically re-open upon a loss of system pressure.

The manual release knob can be used to verify that the piping is completely drained.



Open: The Automatic Drip Check drains accumulated water/fluid from condensation/system leakage from the piping.



Closed: When the system piping suddenly fills with water/fluid the drip check closes.

Construction Materials

Standard

- Body: Nickel Plated Brass
- Stem: Stainless Steel 316
- Seals: EPDM
- Ball: Stainless Steel 316

Stainless Steel 316 Construction

- Body: Stainless Steel 316
- Stem: Stainless Steel 316
- Seals: EPDM
- Ball: Stainless Steel 316

Ni.Al.Bronze (Seawater) Construction

- Body: Ni.Al. Bronze ASTM B148 C95800
- Stem: Monel 400
- Seals: EPDM
- Ball: Ni.Al. Bronze

Pressure Rating

- 25 bar (365 psi)

Properties

- Minimum required flow for closing: 554 l/h (2.44 gpm)
- Closed at 0.12 bar (1.76 psi), maximum

Reopens at 0.04 bar (0.59 psi), minimum

Connections

- Inlet: 1/2" NPT male
- Drain: 1/2" NPT female

Approvals

- UL-Listed ⁽¹⁾
- EN and VdS compliant
- FM-Approved ⁽¹⁾

Notes:

⁽¹⁾ When installed on Approved/Listed BERMAD Deluge Valves

Contact us:

Chainaris Phuket Engineering Co., Ltd.

63/13 Moo.2, T.Vichit, A.Maung Phuket 83000

Tel: 076-513100-3 Fax: 076-513105

Line: @chainaris, @chainarisshop

