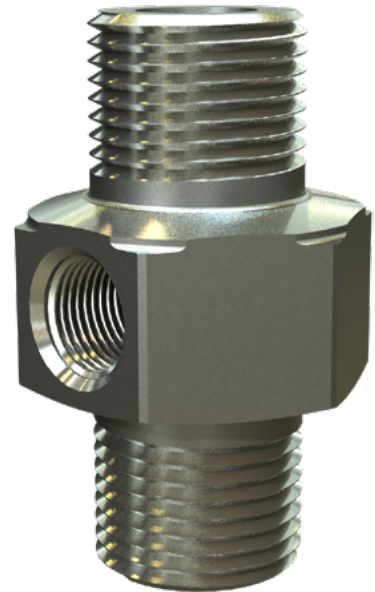


### Priming Restriction

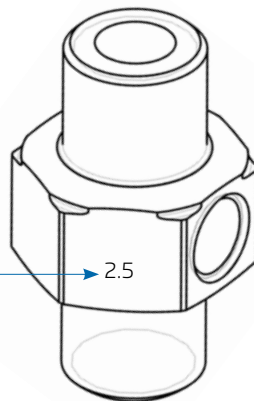
The Priming Restriction is a flow restriction component used as an integral orifice in the control trim of BERMAD Deluge Valves.

In addition it incorporates two ¼" NPT (F) ports to enable a priming pressure connection to supplementary instruments like a solenoid or relay valve.

The internal restriction orifice is available in a number of diameters, each suited to a particular valve/pilot size.



Notching on the corners of the hexagonal indicate on which side of the priming restriction the restriction orifice is located – See section drawing below



The diameter (mm) of the restriction orifice is shown on a face of the hexagonal

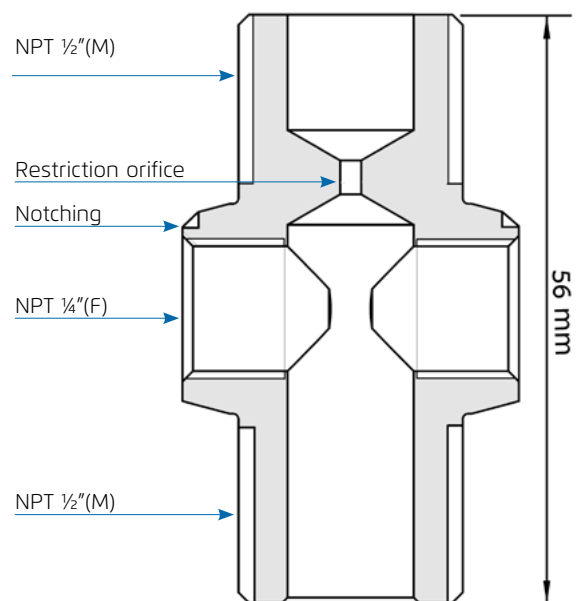
#### Available Materials

- Stainless Steel 316 (standard)
- Nickel Aluminum Bronze
- Monel
- Duplex

#### Technical Data

**Pressure Rating:** 25 bar 365 psi

**Connections:** Inlet & Outlet - ½" NPT (M)  
Side Ports - ¼" NPT (F)



Contact us:

Chainaris Phuket Engineering Co., Ltd.

63/13 Moo.2, T.Vichit, A.Maung Phuket 83000 Tel: 076-513100-3 Fax: 076-513105



[www.bermad.com](http://www.bermad.com) Line: @chainaris, @chainarishop

The information contained herein may be changed by BERMAD without notice. BERMAD shall not be held liable for any errors.  
© Copyright 2008-2018 BERMAD CS Ltd.



June 2018