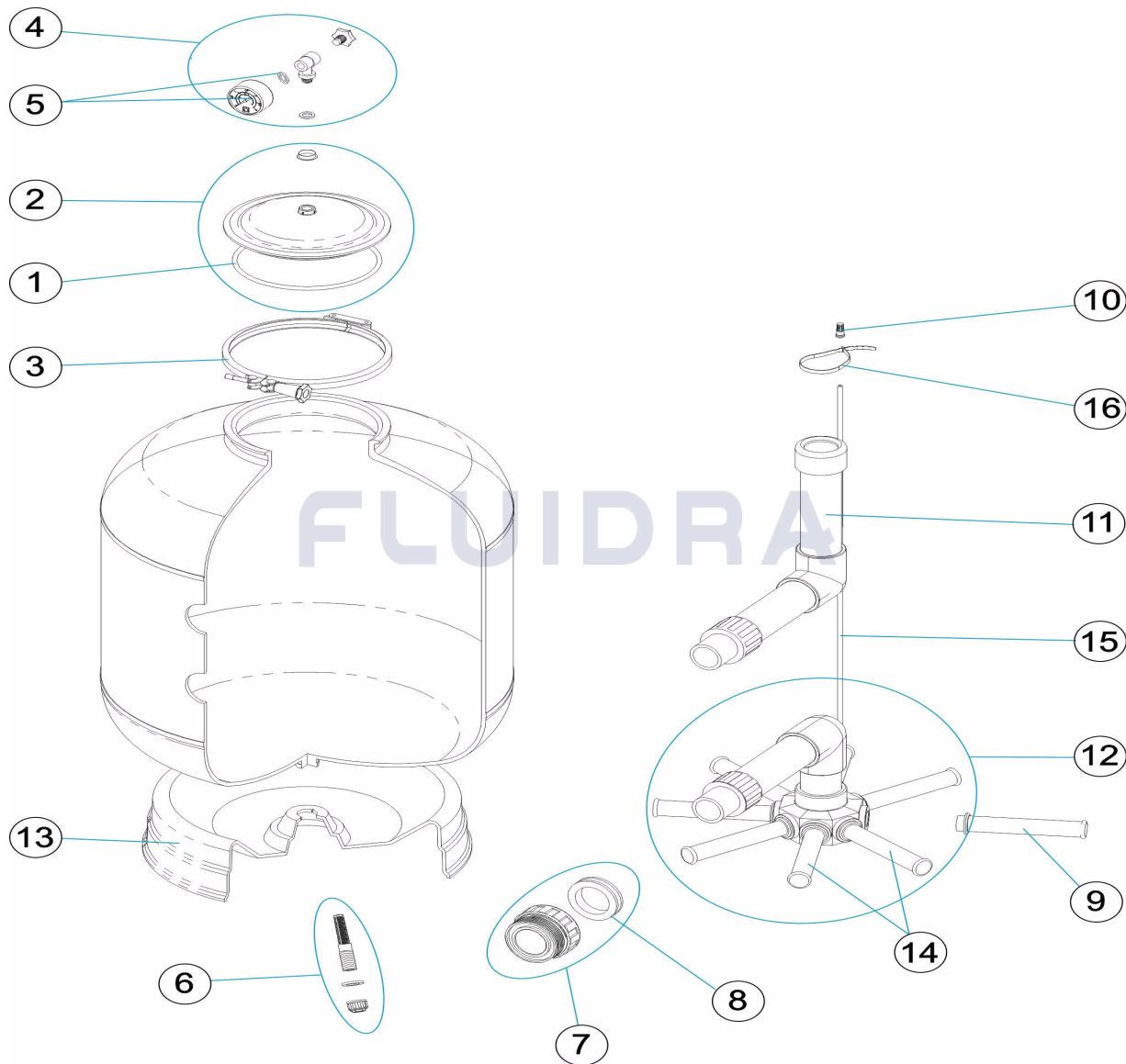


CODIGO **04584, 04585, 04586**

DESCRIPCION: **FILTROS CORONA D. 400-500-600**



ESPAÑOL

POS	CODIGO	DESCRIPCION	CANTIDAD	POS	CODIGO	DESCRIPCION	CANTIDAD
1	4404090103	JUEGO DE 2 JUNTAS TÓRICAS		11	* 4404010054	CJTO. DIFUSOR D. 600	
2	4404090102	TAPA TRANSPARENTE + ANILLO		12	* 4404010055	CJTO. COLECTOR D. 400	
3	4404080103	ANILLO CIERRE 203 NEGRO		12	* 4404010056	CJTO. COLECTOR D. 500	
4	4404080104	MANOMETRO COMPLETO		12	* 4404010057	CJTO. COLECTOR D. 600	
5	4404010103	MANOMETRO 1/8" 3 KG./C "		13	* 4404010058	PIE FILTRO D. 400	
6	4404220103	PURGA ARENA		13	* 4404300108	PIE FILTRO D.480/560	
7	4404020103	RACORD 1 1/2' + JUNTA CONCAVA		13	* 4404010066	PIE FILTRO D. 600	
8	4404020112	JUNTA CONCAVA 1 1/2"		14	* 4404010025	CJTO. BRAZOS COLECTOR D. 400	
9	* 4404300917	BRAZO COLECTOR 1" 110 M "		14	* 4404010026	CJTO. BRAZOS COLECTOR	
9	* 4404300915	BRAZO COLECTOR 1" 175 M "		14	* 4404010027	CJTO. BRAZOS COLECTOR D. 650	
9	* 4404300916	BRAZO COLECTOR 1" 225 M "		15	* 04584R0405	TUBO PVC 6 MM 400	
10	4404040108	PURGA AIRE		15	* 04591R0405	TUBO PVC 6 M/M. 500	
11	* 4404010052	CJTO. DIFUSOR D. 400		15	* 04959R0431	TUBO PVC 6 MM D. 450	

CODIGO **04584, 04585, 04586**DESCRIPCION: **FILTROS CORONA D. 400-500-600**

11	* 4404010053	CJTO. DIFUSOR D. 500	16	00471R0416	BRIDA " UNEX" REF.2244"
----	--------------	----------------------	----	------------	-------------------------

CODIGO 04584, 04585, 04586

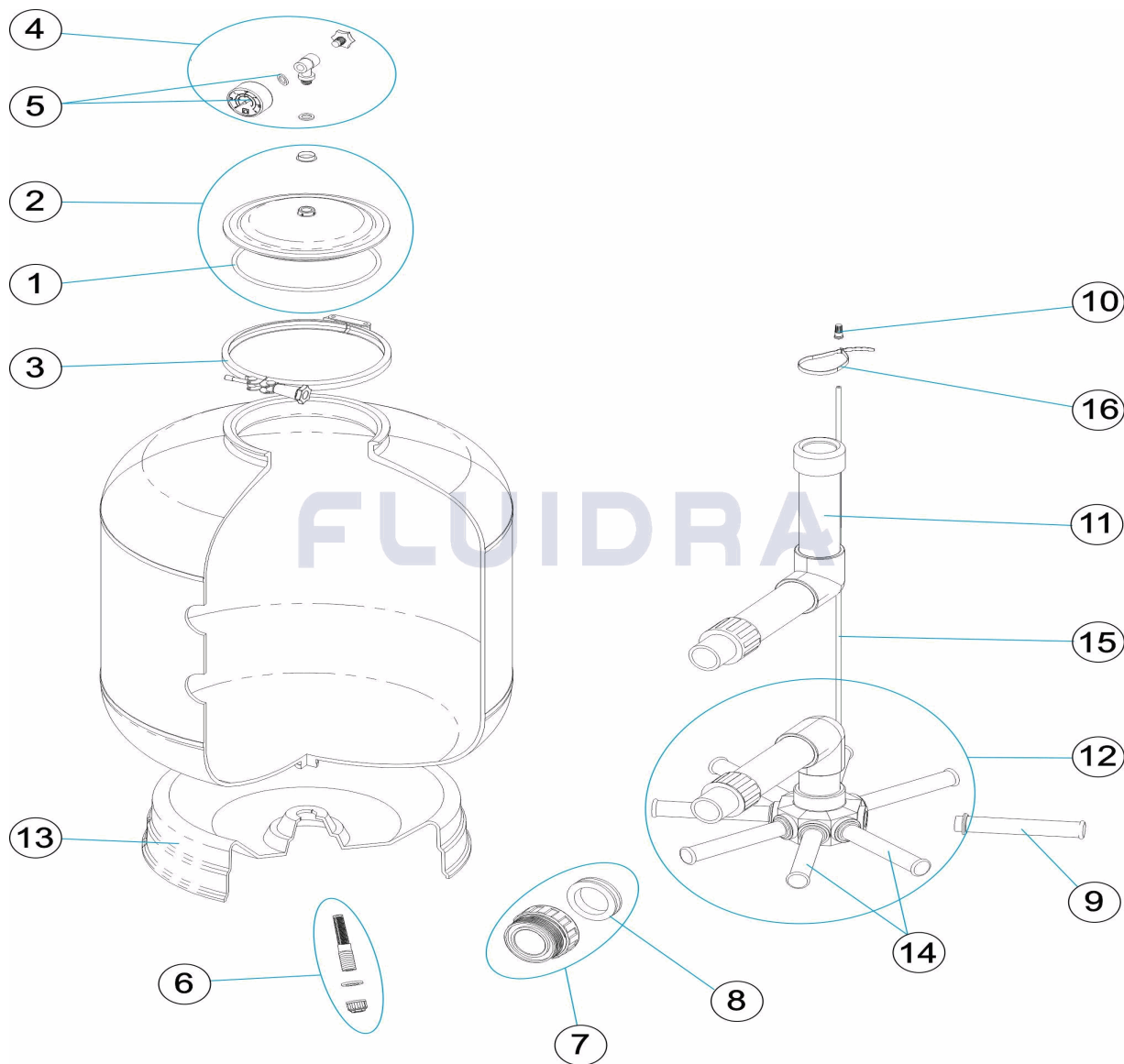
DESCRIPCION: FILTROS CORONA D. 400-500-600

OBSERVACIONES

POS	CODIGO	OBSERVACIONES
9	* 4404300917	PARA: 04584 [4UT]
9	* 4404300915	PARA: 04585 [4UT]
9	* 4404300916	PARA: 04586 [4UT]
11	* 4404010052	PARA: 04584
11	* 4404010053	PARA: 04585
11	* 4404010054	PARA: 04586
12	* 4404010055	PARA: 04584
12	* 4404010056	PARA: 04585
12	* 4404010057	PARA: 04586
13	* 4404010058	PARA: 04584
13	* 4404300108	PARA: 04585
13	* 4404010066	PARA: 04586
14	* 4404010025	PARA: 04584
14	* 4404010026	PARA: 04585
14	* 4404010027	PARA: 04586
15	* 04584R0405	PARA: 04584
15	* 04591R0405	PARA: 04585
15	* 04959R0431	PARA: 04586

CODE 04584, 04585, 04586

DESCRIPTION: FILTRES CORONA D. 400-500-600



FRANCAIS

POS	CODE	DESCRIPTION	QUANTITE	POS	CODE	DESCRIPTION	QUANTITE
1	4404090103	SET DE 2 JOINTS TORIQUES		11	* 4404010054	ENSEMBLE DIFFUSEUR D. 600	
2	4404090102	COUVERCLE TRANSPARENT + JOINT		12	* 4404010055	ENSEMBLE COLLECTEUR D. 400	
3	4404080103	COLLIER DE FERMETURE 203 NOIR		12	* 4404010056	ENSEMBLE COLLECTEUR D. 500	
4	4404080104	MANOMETRE COMPLET		12	* 4404010057	ENSEMBLE COLLECTEUR D. 600	
5	4404010103	MANOMETRE 1/8" 3 KG./C "		13	* 4404010058	SOCLE FILTRE D 400	
6	4404220103	PURGE SABLE		13	* 4404300108	SOCLE FILTRE D 480/560	
7	4404020103	RACCORD 1 1/2" + JOINT CONCAVE		13	* 4404010066	SOCLE FILTRE D 600	
8	4404020112	JOINT CONCAVE 1 1/2"		14	* 4404010025	ENSEMBLE BRAS DE REPARTITEUR D. 400	
9	* 4404300917	BRAS DE REPARTITEUR 1" 110 M "		14	* 4404010026	ENSEMBLE BRAS DE REPARTITEUR	
9	* 4404300915	BRAS DE REPARTITEUR 1" 175 M "		14	* 4404010027	ENSEMBLE BRAS DE REPARTITEUR D. 650	
9	* 4404300916	BRAS DE REPARTITEUR 1" 225 M "		15	* 04584R0405	TUBE PURGE D.6 - 400MM.	
10	4404040108	PURGE D'AIR		15	* 04591R0405	TUBE PVC 6 M/M. 500	
11	* 4404010052	ENSEMBLE DIFFUSEUR D. 400		15	* 04959R0431	TUBE PURGE D.6 - 450 MM	

CODE **04584, 04585, 04586**

DESCRIPTION: **FILTRES CORONA D. 400-500-600**

11	* 4404010053	ENSEMBLE DIFFUSEUR D. 500	16	00471R0416	BRIDE UNEX 2244
----	--------------	---------------------------	----	------------	-----------------

CODE **04584, 04585, 04586**

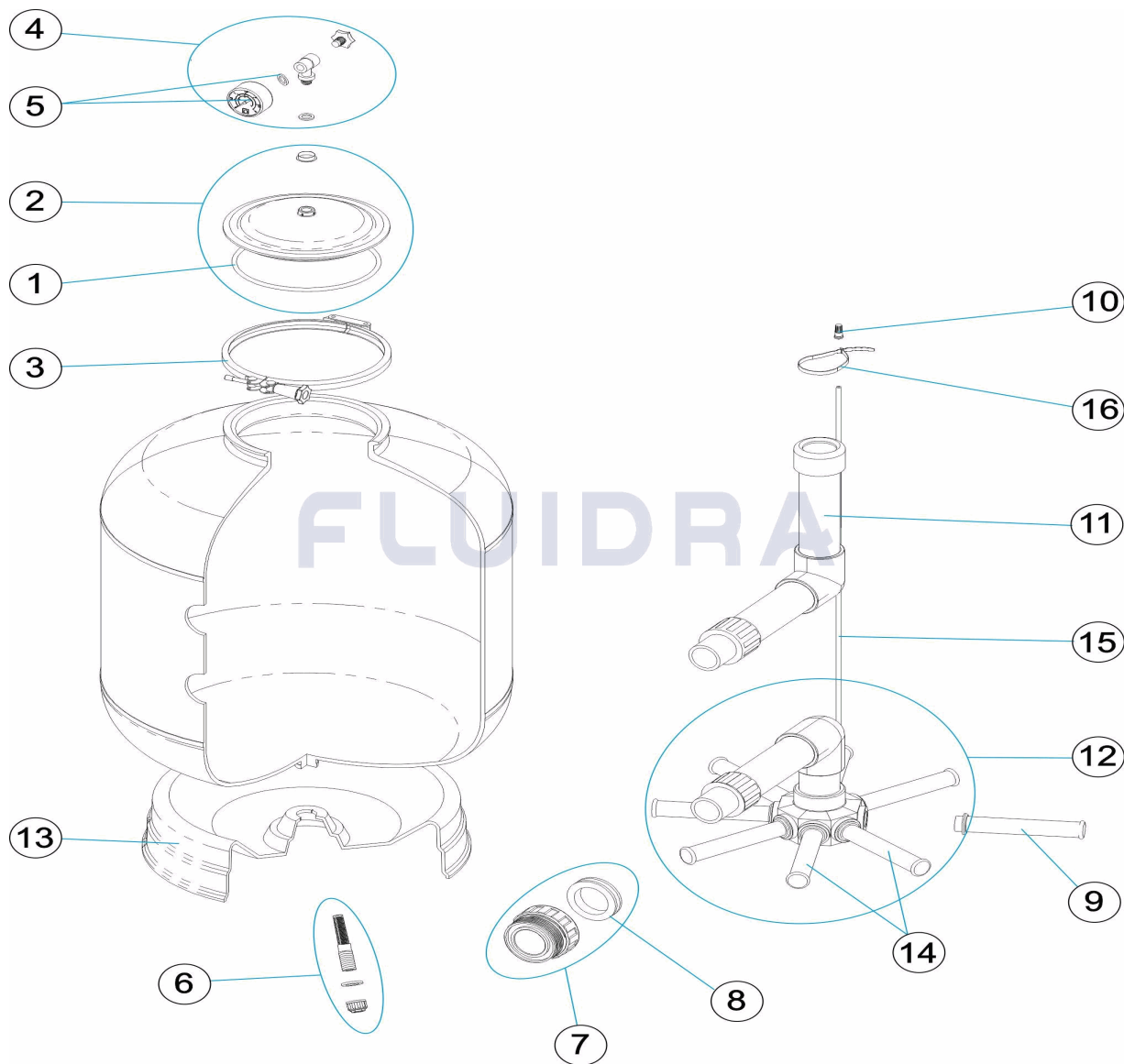
DESCRIPTION: **FILTRES CORONA D. 400-500-600**

OBSERVATIONS

POS	CODE	OBSERVATIONS
9	* 4404300917	POUR: 04584 [4UT]
9	* 4404300915	POUR: 04585 [4UT]
9	* 4404300916	POUR: 04586 [4UT]
11	* 4404010052	POUR: 04584
11	* 4404010053	POUR: 04585
11	* 4404010054	POUR: 04586
12	* 4404010055	POUR: 04584
12	* 4404010056	POUR: 04585
12	* 4404010057	POUR: 04586
13	* 4404010058	POUR: 04584
13	* 4404300108	POUR: 04585
13	* 4404010066	POUR: 04586
14	* 4404010025	POUR: 04584
14	* 4404010026	POUR: 04585
14	* 4404010027	POUR: 04586
15	* 04584R0405	POUR: 04584
15	* 04591R0405	POUR: 04585
15	* 04959R0431	POUR: 04586

CODE **04584, 04585, 04586**

DESCRIPTION: **CORONA FILTERS D. 400-500-600**



ENGLISH

POS	CODE	DESCRIPTION	QUANTITY	POS	CODE	DESCRIPTION	QUANTITY
1	4404090103	SET OF 2 O-RINGS		11	* 4404010054	DIFFUSER ASSEMBLY D. 600	
2	4404090102	TRANSPARENT LID + GASKET		12	* 4404010055	MANIFOLD ASSEMBLY D. 400	
3	4404080103	BLACK LOCKING FIXTURE 203		12	* 4404010056	MANIFOLD ASSEMBLY D. 500	
4	4404080104	COMPLETE PRESSURE GAUGE UNIT		12	* 4404010057	MANIFOLD ASSEMBLY D. 600	
5	4404010103	PRESSURE GAUGE 1/8" 3 KG./C "		13	* 4404010058	FILTER BASE D. 400	
6	4404220103	SAND PURGE		13	* 4404300108	FILTER BASE D. 480/560	
7	4404020103	1 1/2' FITTING + CONCAVE GASKET		13	* 4404010066	FILTER BASE D. 600	
8	4404020112	CONCAVE GASKET 1 1/2"		14	* 4404010025	MANIFOLD ARM ASSEMBLY D. 400	
9	* 4404300917	MANIFOLD ARM 1" 110 M "		14	* 4404010026	MANIFOLD ARM ASSEMBLY	
9	* 4404300915	MANIFOLD ARM 1" 175 M "		14	* 4404010027	MANIFOLD ARM ASSEMBLY D. 650	
9	* 4404300916	MANIFOLD ARM 1" 225 M "		15	* 04584R0405	TUBE 6MM D 400	
10	4404040108	AIR PURGE		15	* 04591R0405	TUBE 6MM D 500	
11	* 4404010052	DIFFUSER ASSEMBLY D. 400		15	* 04959R0431	TUBE 6MM D 450	

CODE **04584, 04585, 04586**

DESCRIPTION: **CORONA FILTERS D. 400-500-600**

11	* 4404010053	DIFFUSER ASSEMBLY D. 500	16	00471R0416	FLANGE UNEX 2244
----	--------------	--------------------------	----	------------	------------------

CODE **04584, 04585, 04586**

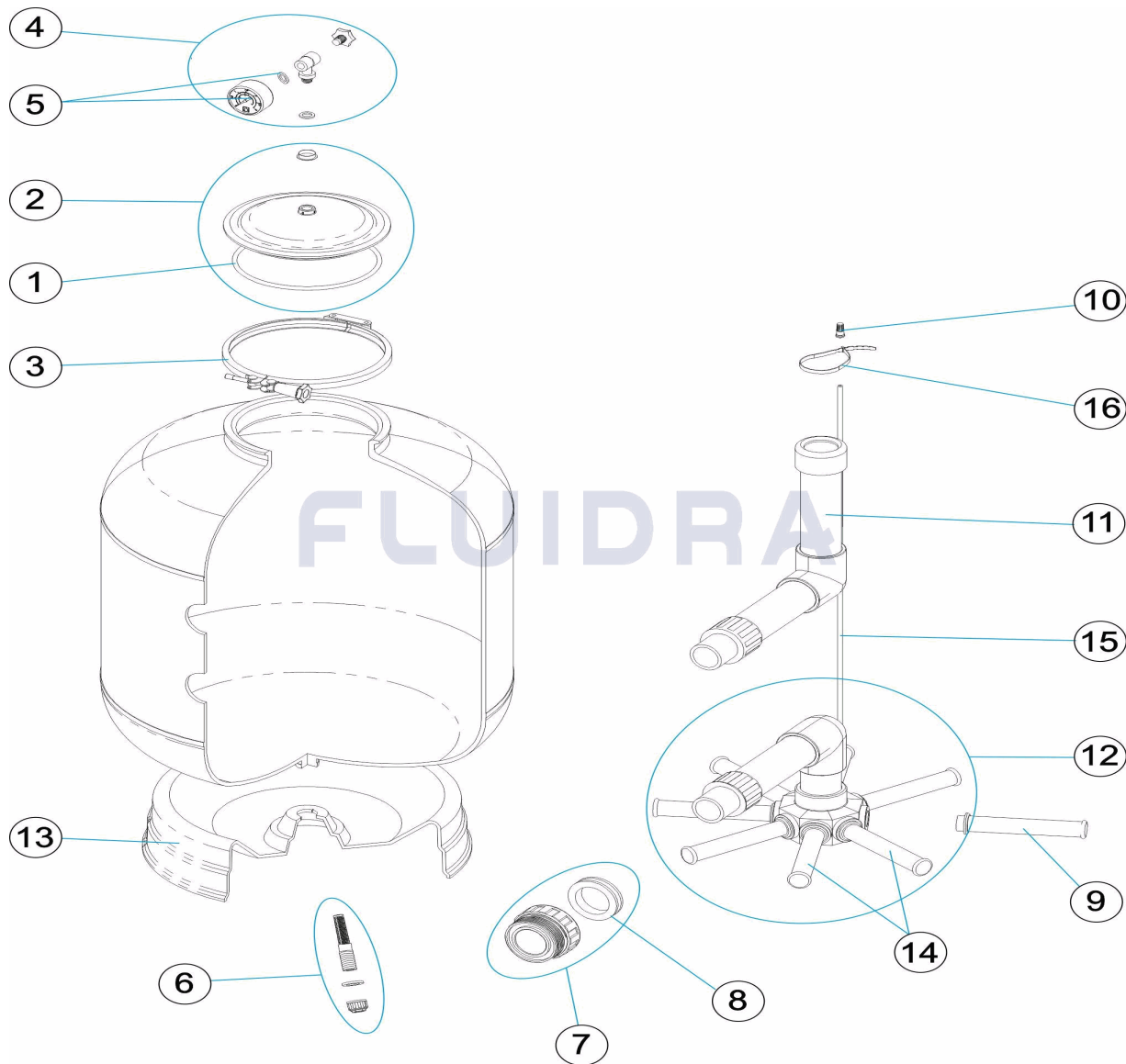
DESCRIPTION: **CORONA FILTERS D. 400-500-600**

OBSERVATIONS

POS	CODE	OBSERVATIONS
9	* 4404300917	FOR: 04584 [4UT]
9	* 4404300915	FOR: 04585 [4UT]
9	* 4404300916	FOR: 04586 [4UT]
11	* 4404010052	FOR: 04584
11	* 4404010053	FOR: 04585
11	* 4404010054	FOR: 04586
12	* 4404010055	FOR: 04584
12	* 4404010056	FOR: 04585
12	* 4404010057	FOR: 04586
13	* 4404010058	FOR: 04584
13	* 4404300108	FOR: 04585
13	* 4404010066	FOR: 04586
14	* 4404010025	FOR: 04584
14	* 4404010026	FOR: 04585
14	* 4404010027	FOR: 04586
15	* 04584R0405	FOR: 04584
15	* 04591R0405	FOR: 04585
15	* 04959R0431	FOR: 04586

CODICE **04584, 04585, 04586**

DESCRIZIONE: **FILTRI CORONA D. 400-500-600**



ITALIANO

POS	CODICE	DESCRIZIONE	QUANTITA'	POS	CODICE	DESCRIZIONE	QUANTITA'
1	4404090103	SET DI 2 GIUNTA TORICA		11	* 4404010054	RACCORDO DIFFUSORE D. 600	
2	4404090102	COPERCHIO TRASPARENTE + ANELLO		12	* 4404010055	KIT COLLETTORE D. 400	
3	4404080103	ANELLO CHIUSURA 203 NERO		12	* 4404010056	KIT COLLETTORE D. 500	
4	4404080104	MANOMETRO COMPLETO		12	* 4404010057	KIT COLLETTORE D. 600	
5	4404010103	MANOMETRO 1/8" 3 KG./C "		13	* 4404010058	BASE FILTRO D 400	
6	4404220103	SCARICO SABBIA		13	* 4404300108	BASE FILTRO D 480/560	
7	4404020103	RACCORDO 1 1/2" + GUAR. CONCAVA		13	* 4404010066	BASE FILTRO D 600	
8	4404020112	GUARNIZIONI CONCAVA 1 1/2"		14	* 4404010025	GRUPPO CANDELOTTO COLLECTORE D. 4	
9	* 4404300917	CANDELOTTO COLLECTORE 1" 110 M "		14	* 4404010026	GRUPPO CANDELOTTO COLLECTORE	
9	* 4404300915	CANDELOTTO COLLECTORE 1" 175 M "		14	* 4404010027	GRUPPO CANDELOTTO COLLECTORE D. 6	
9	* 4404300916	CANDELOTTO COLLECTORE 1" 225 M "		15	* 04584R0405	TUBO PVC 6 MM D.400	
10	4404040108	SFIATO ARIA		15	* 04591R0405	TUBO PVC 6 MM D.500	
11	* 4404010052	RACCORDO DIFFUSORE D. 400		15	* 04959R0431	TUBO PVC 6 MM D.450	

CODICE **04584, 04585, 04586**

DESCRIZIONE: **FILTRI CORONA D. 400-500-600**

11	* 4404010053	RACCORDO DIFFUSORE D. 500	16	00471R0416	FLANGIA UNEX 2244
----	--------------	---------------------------	----	------------	-------------------

CODICE **04584, 04585, 04586**

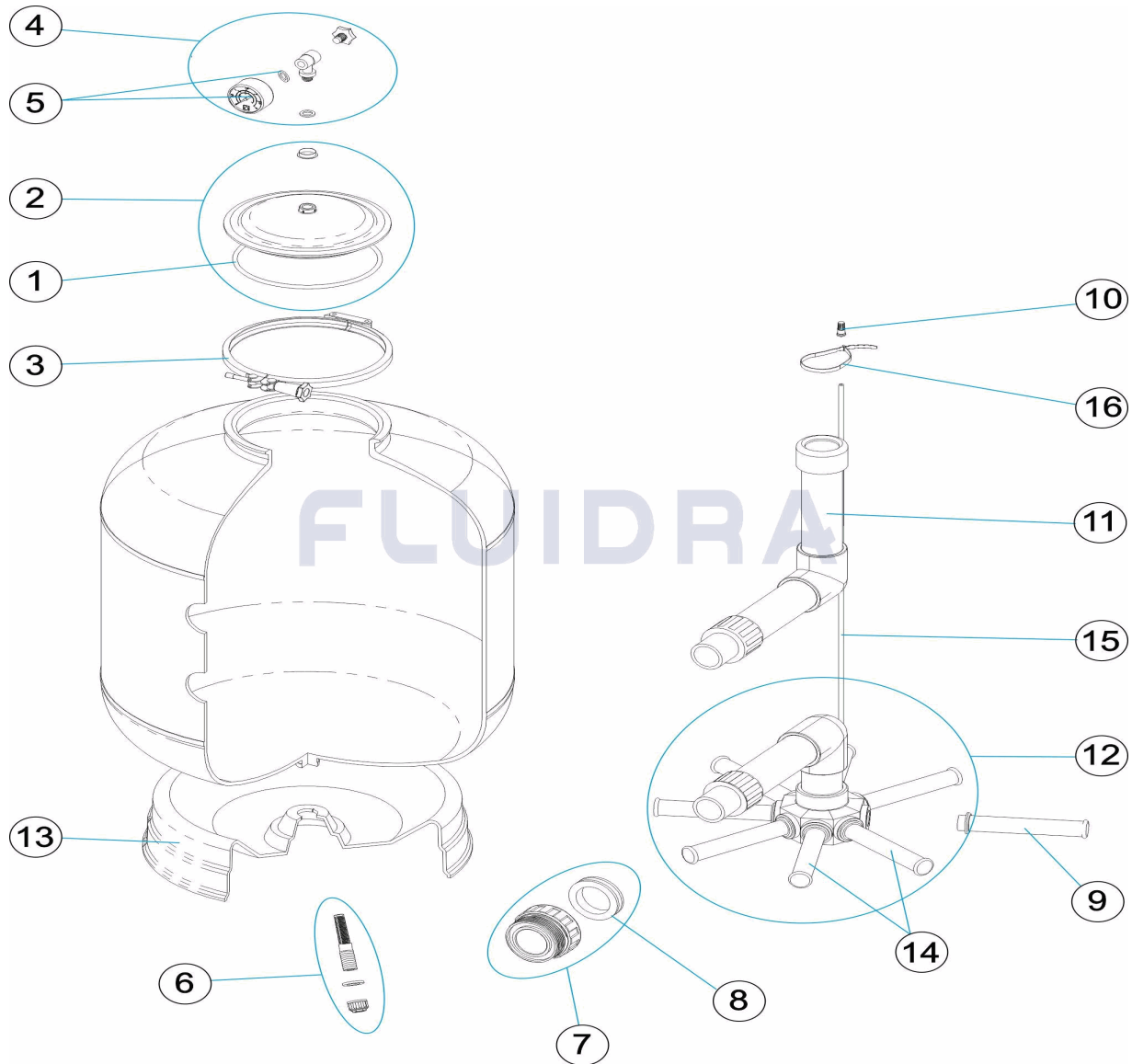
DESCRIZIONE: **FILTRI CORONA D. 400-500-600**

OSSERVAZIONI

POS	CODICE	OSSERVAZIONI
9	* 4404300917	PER: 04584 [4UT]
9	* 4404300915	PER: 04585 [4UT]
9	* 4404300916	PER: 04586 [4UT]
11	* 4404010052	PER: 04584
11	* 4404010053	PER: 04585
11	* 4404010054	PER: 04586
12	* 4404010055	PER: 04584
12	* 4404010056	PER: 04585
12	* 4404010057	PER: 04586
13	* 4404010058	PER: 04584
13	* 4404300108	PER: 04585
13	* 4404010066	PER: 04586
14	* 4404010025	PER: 04584
14	* 4404010026	PER: 04585
14	* 4404010027	PER: 04586
15	* 04584R0405	PER: 04584
15	* 04591R0405	PER: 04585
15	* 04959R0431	PER: 04586

CODE 04584, 04585, 04586

BESCHREIBUNG: FILTER CORONA D. 400-500-600



DEUTSCH

POS	CODE	BESCHREIBUNG	MENGE	POS	CODE	BESCHREIBUNG	MENGE
1	4404090103	SET 2 O-RINGE		11	* 4404010054	SET WASSERVERTEILER D. 400	
2	4404090102	ABDECKUNG TRANSPARENT MIT RING		12	* 4404010055	SAMMELROHRSET D. 400	
3	4404080103	SCHLIESSRING 203 SCHWARZ		12	* 4404010056	SAMMELROHRSET D. 500	
4	4404080104	MANOMETER KOMPLETT		12	* 4404010057	SAMMELROHRSET D. 600	
5	4404010103	MANOMETER 1/8" 3 KG/C "		13	* 4404010058	FILTERFUSS D. 400	
6	4404220103	SANDENTLEERUNG		13	* 4404300108	FILTERFUSS D. 480/560	
7	4404020103	GEWINDESTÜCK 1 1/2" UND DICHTUNG KC		13	* 4404010066	FILTERFUSS D. 600	
8	4404020112	DICHTUNG KONKAV 1 1/2"		14	* 4404010025	SET FILTERSTERN-SCHLITZROHR D. 400	
9	* 4404300917	FILTERSTERN-SCHLITZROHR 1" 110 M "		14	* 4404010026	SET FILTERSTERN-SCHLITZROHR	
9	* 4404300915	FILTERSTERN-SCHLITZROHR 1" 175 M "		14	* 4404010027	SET FILTERSTERN-SCHLITZROHR D. 650	
9	* 4404300916	FILTERSTERN-SCHLITZROHR 1" 225 M "		15	* 04584R0405	ROHR PVC 6 MM 400	
10	4404040108	ENTLÜFTUNG		15	* 04591R0405	ROHR PVC 6 MM 500	
11	* 4404010052	SET WASSERVERTEILER D. 400		15	* 04959R0431	WASSERENTLEERUNG D.6 - 450MM.	

CODE **04584, 04585, 04586**

BESCHREIBUNG: **FILTER CORONA D. 400-500-600**

11	* 4404010053	SET WASSERVERTEILER D. 500	16	00471R0416	FLANSCH " UNEX" REF.2244"
----	--------------	----------------------------	----	------------	---------------------------

CODE **04584, 04585, 04586**

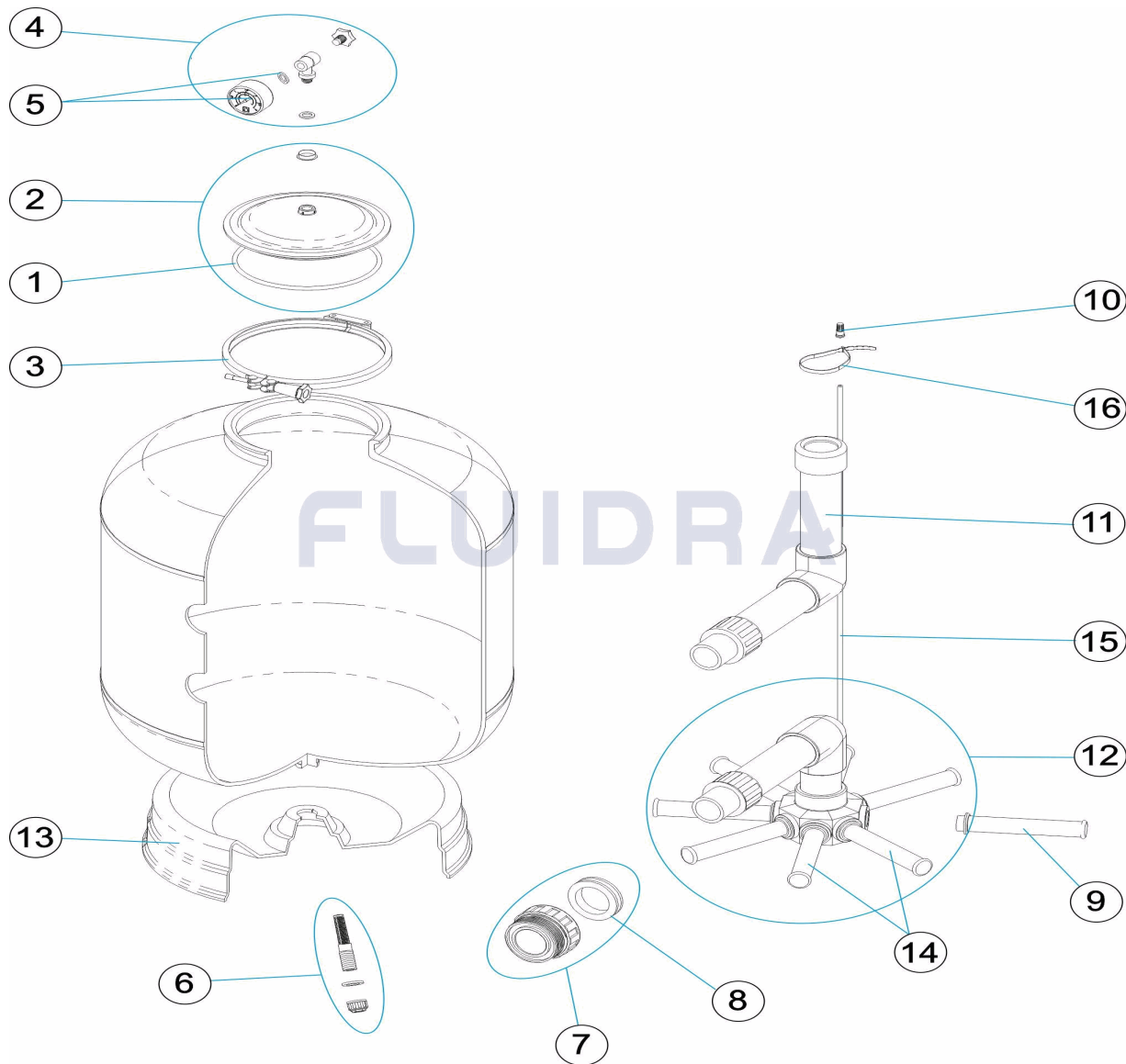
BESCHREIBUNG: **FILTER CORONA D. 400-500-600**

HINWEISE

POS	CODE	HINWEISE
9	* 4404300917	FÜR: 04584 [4UT]
9	* 4404300915	FÜR: 04585 [4UT]
9	* 4404300916	FÜR: 04586 [4UT]
11	* 4404010052	FÜR: 04584
11	* 4404010053	FÜR: 04585
11	* 4404010054	FÜR: 04586
12	* 4404010055	FÜR: 04584
12	* 4404010056	FÜR: 04585
12	* 4404010057	FÜR: 04586
13	* 4404010058	FÜR: 04584
13	* 4404300108	FÜR: 04585
13	* 4404010066	FÜR: 04586
14	* 4404010025	FÜR: 04584
14	* 4404010026	FÜR: 04585
14	* 4404010027	FÜR: 04586
15	* 04584R0405	FÜR: 04584
15	* 04591R0405	FÜR: 04585
15	* 04959R0431	FÜR: 04586

CODIGO **04584, 04585, 04586**

DESCRIÇÃO: **FILTROS CORONA D. 400-500-600**



PORTUGUES

POS	CODIGO	DESCRIÇÃO	JANTIDADE	POS	CODIGO	DESCRIÇÃO	JANTIDADE
1	4404090103	CONJUNTO DE 2 JUNTAS TORICAS		11	* 4404010054	CJTO. DIFUSOR D. 600	
2	4404090102	TAMPA TRANSPARENTE + ARO		12	* 4404010055	CJTO. COLECTOR D. 400	
3	4404080103	FECHO COMPLETO		12	* 4404010056	CJTO. COLECTOR D. 500	
4	4404080104	MANÓMETRO COMPLETO		12	* 4404010057	CJTO. COLECTOR D. 600	
5	4404010103	MANOMETRO 1/8" 3 KG./C "		13	* 4404010058	PÉ FILTRO D 400	
6	4404220103	PURGA AREIA		13	* 4404300108	PÉ FILTRO D 480/560	
7	4404020103	RACORD 1 1/2' + JUNTA CONCAVA		13	* 4404010066	PÉ FILTRO D 600	
8	4404020112	JUNTA CÔNCAVA 1 1/2"		14	* 4404010025	CJTO. BRAÇO COLECTOR D. 400	
9	* 4404300917	BRAÇO COLECTOR 1" 110 M "		14	* 4404010026	CJTO. BRAÇO COLECTOR	
9	* 4404300915	BRAÇO COLECTOR 1" 175 M "		14	* 4404010027	CJTO. BRAÇO COLECTOR D.650	
9	* 4404300916	BRAÇO COLECTOR 1" 225 M "		15	* 04584R0405	TUBO PVC 6 MM D. 400	
10	4404040108	PURGA AREIA		15	* 04591R0405	TUBO PVC 6 MM D. 500	
11	* 4404010052	CJTO. DIFUSOR D. 400		15	* 04959R0431	TUBO PVC 6 MM D. 450	

CODIGO **04584, 04585, 04586**

DESCRIÇÃO: **FILTROS CORONA D. 400-500-600**

11	* 4404010053	CJTO. DIFUSOR D. 500	16	00471R0416	FLANGE UNEX 2244
----	--------------	----------------------	----	------------	------------------

CODIGO 04584, 04585, 04586

DESCRIÇÃO: FILTROS CORONA D. 400-500-600

OBSERVAÇÕES

POS	CODIGO	OBSERVAÇÕES
9	* 4404300917	PARA: 04584 [4UT]
9	* 4404300915	PARA: 04585 [4UT]
9	* 4404300916	PARA: 04586 [4UT]
11	* 4404010052	PARA: 04584
11	* 4404010053	PARA: 04585
11	* 4404010054	PARA: 04586
12	* 4404010055	PARA: 04584
12	* 4404010056	PARA: 04585
12	* 4404010057	PARA: 04586
13	* 4404010058	PARA: 04584
13	* 4404300108	PARA: 04585
13	* 4404010066	PARA: 04586
14	* 4404010025	PARA: 04584
14	* 4404010026	PARA: 04585
14	* 4404010027	PARA: 04586
15	* 04584R0405	PARA: 04584
15	* 04591R0405	PARA: 04585
15	* 04959R0431	PARA: 04586