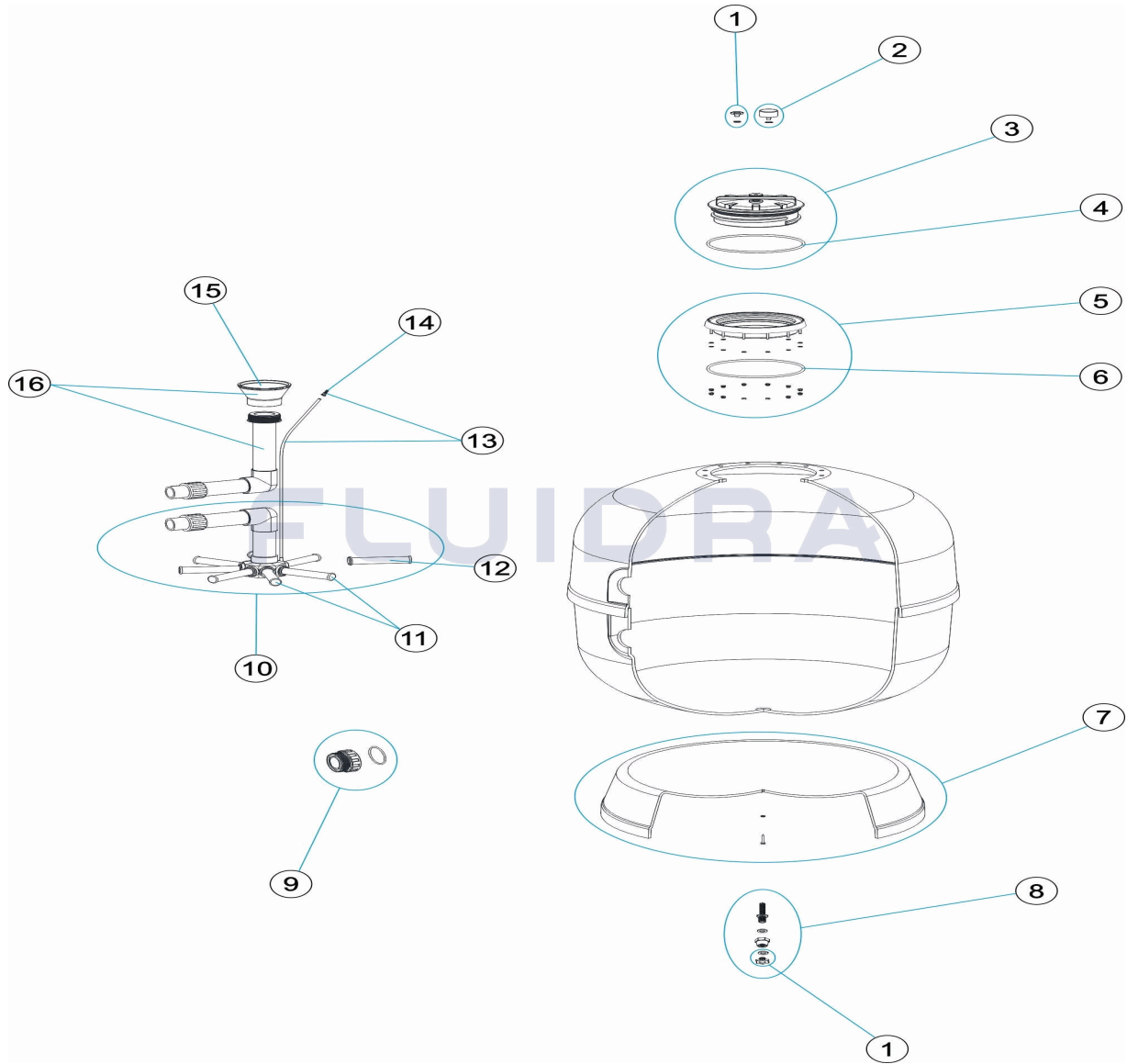


**CODIGO** 27092-0100, 27093-0100, 27094-0100, 27095-0100, 27096T-0100, 27097-0100, 27098

**DESCRIPCION:** FILTRO ASTER TAPA ROSCADA



**ESPAÑOL**

POS	CODIGO	DESCRIPCION	CANTIDAD	POS	CODIGO	DESCRIPCION	CANTIDAD
1	4404040113	TAPON PURGA Y JUNTA		9	* 4404290108	RACOR SALIDA 2 ½" + JUNTA TORIC "	
2	4404180405	MANOMETRO 1/8" 3 KG/C "		10	* 4404010131	CJTO. COLECTOR D. 350	
3	4404260201	TAPA FILTRO		10	* 4404010132	CJTO. COLECTOR D.450	
4	4404260202	JUNTA TAPA		10	* 4404010114	CJTO. COLECTOR D. 500	
5	4404260205	ARO TAPA COMPLETO		10	* 4404010115	CJTO. COLECTOR D. 600	
6	4404020116	JUNTA TORICA 255X4		10	* 4404010133	CJTO. COLECTOR D.650	
7	* 4404010040	PIE FILTRO D. 350		10	* 4404010116	CJTO. COLECTOR D. 750	
7	* 4404010088	PIE FILTRO D. 450		10	* 4404010412	CJTO. COLECTOR D. 900 T. HEMBRA	
7	* 4404010112	PIE FILTRO D.500		11	* 4404010025	CJTO. BRAZOS COLECTOR D. 400	
7	* 4404010113	PIE FILTRO D. 600		11	* 4404010026	CJTO. BRAZOS COLECTOR	
7	* 4404300924	PIE FILTRO D. 750		11	* 4404010028	CJTO. BRAZOS COLECTOR D. 650	
7	* 4404010093	PIE FILTRO D. 950		11	* 4404010048	CJTO. BRAZOS COLECTOR D. 750	

**CODIGO**                    **27092-0100, 27093-0100, 27094-0100, 27095-0100, 27096T-0100,**  
**27097-0100, 27098**

**DESCRIPCION: FILTRO ASTER TAPA ROSCADA**

8	4404010108	PURGA AGUA 3/8"	12	* 4404300917	BRAZO COLECTOR 1" 110 M "
9	* 4404040103	RACORD 1 ½" + JUNTA TORIC "	12	* 4404300915	BRAZO COLECTOR 1" 175 M "
9	* 4404040112	RACORD SALIDA 2" + JUNTA TORIC "	12	* 4404300916	BRAZO COLECTOR 1" 225 M "
12	* 4404290109	BRAZO COLECTOR 1" 265 M "	16	* 4404010135	CJTO. DIFUSOR ASTER 350
13	* 4404301003	PURGA AIRE + TUBO L=670	16	* 4404010136	CJTO. DIFUSOR ASTER 450
13	* 4404300707	TUBO RIGIDO L-845	16	* 4404010118	CJTO. DIFUSOR D. 500
14	4404040108	PURGA AIRE	16	* 4404010119	CJTO. DIFUSOR D. 600
15	* 4404301004	CONO DIFUSOR D.50	16	* 4404010137	CJTO. DIFUSOR ASTER 650
15	* 4404300910	CONO DIFUSOR D. 63	16	* 4404010120	CJTO. DIFUSOR D. 750
15	* 4404190324	CONO DIFUSOR D.75	16	* 4404010127	CJTO. DIFUSOR D. 900- 2 ½" T. HEMBRA

**CODIGO**                    **27092-0100, 27093-0100, 27094-0100, 27095-0100, 27096T-0100,**  
**27097-0100, 27098**

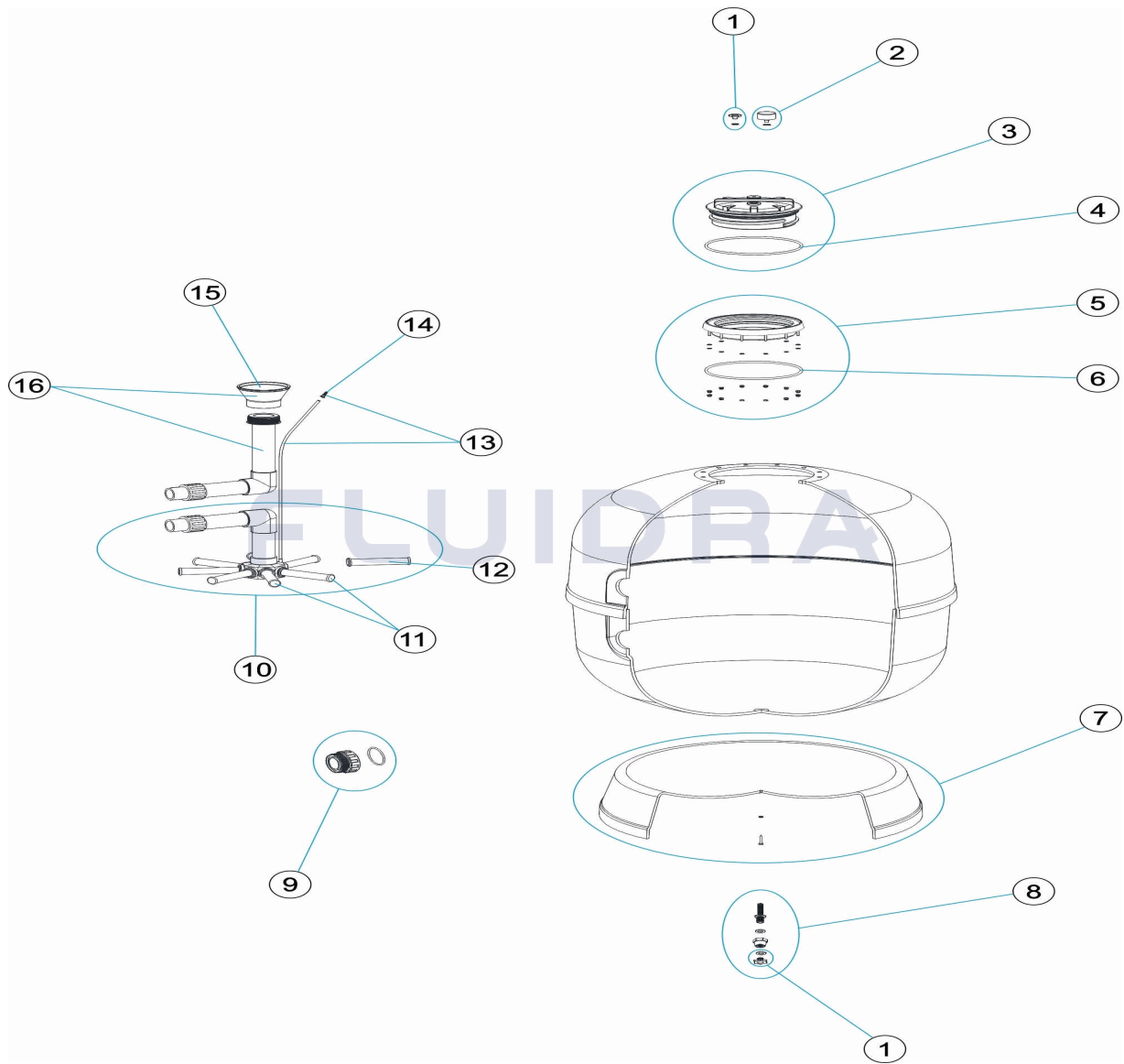
**DESCRIPCION: FILTRO ASTER TAPA ROSCADA**

## OBSERVACIONES

POS	CODIGO	OBSERVACIONES
7	* 4404010040	PARA: 27092-0100
7	* 4404010088	PARA: 27093-0100
7	* 4404010112	PARA: 27094-0100
7	* 4404010113	PARA: 27095-0100, 27096T-0100
7	* 4404300924	PARA: 27097-0100
7	* 4404010093	PARA: 27098
9	* 4404040103	PARA: 27092-0100, 27093-0100, 27094-0100, 27095-0100, 27096T-0100
9	* 4404040112	PARA: 27097-0100
9	* 4404290108	PARA: 27098
10	* 4404010131	PARA: 27092-0100
10	* 4404010132	PARA: 27093-0100
10	* 4404010114	PARA: 27094-0100
10	* 4404010115	PARA: 27095-0100
10	* 4404010133	PARA: 27096T-0100
10	* 4404010116	PARA: 27097-0100
10	* 4404010412	PARA: 27098
11	* 4404010025	PARA: 27092-0100, 27093-0100, 27094-0100
11	* 4404010026	PARA: 27095-0100, 27096T-0100
11	* 4404010028	PARA: 27097-0100
11	* 4404010048	PARA: 27098
12	* 4404300917	PARA: 27092-0100 [4UT], 27093-0100 [4UT], 27094-0100 [4UT]
12	* 4404300915	PARA: 27095-0100 [4UT], 27096T-0100 [4UT]
12	* 4404300916	PARA: 27097-0100 [6UT]
12	* 4404290109	PARA: 27098 [6UT]
13	* 4404301003	PARA: 27092-0100, 27093-0100, 27094-0100, 27095-0100, 27096T-0100, 27097-0100
13	* 4404300707	PARA: 27098
15	* 4404301004	PARA: 27092-0100, 27093-0100, 27094-0100, 27095-0100, 27096T-0100
15	* 4404300910	PARA: 27097-0100
15	* 4404190324	PARA: 27098
16	* 4404010135	PARA: 27092-0100
16	* 4404010136	PARA: 27093-0100
16	* 4404010118	PARA: 27094-0100
16	* 4404010119	PARA: 27095-0100
16	* 4404010137	PARA: 27096T-0100
16	* 4404010120	PARA: 27097-0100
16	* 4404010127	PARA: 27098

CODE 27092-0100, 27093-0100, 27094-0100, 27095-0100, 27096T-0100,  
27097-0100, 27098

DESCRIPTION: FILTRE ASTER DE COUVERCLE FILETÉ



FRANCAIS

POS	CODE	DESCRIPTION	QUANTITE	POS	CODE	DESCRIPTION	QUANTITE
1	4404040113	BOUCHON PURGE ET JOINT		9	* 4404290108	RACCOR SORTIE 2 1/2" + JOINT TORIQU "	
2	4404180405	MANOMETRE 1/8" 3 KG./C "		10	* 4404010131	ENSEMBLE COLLECTEUR D. 350	
3	4404260201	COUVERCLE DE FILTRE		10	* 4404010132	ENSEMBLE COLLECTEUR D. 450	
4	4404260202	JOINT DE COUVERCLE		10	* 4404010114	ENSEMBLE COLLECTEUR D. 500	
5	4404260205	BRIDE DE COUVERCLE COMPLETE		10	* 4404010115	ENSEMBLE COLLECTEUR D. 600	
6	4404020116	JOINT TORIQUE 255X4		10	* 4404010133	ENSEMBLE COLLECTEUR D. 650	
7	* 4404010040	SOCLE FILTRE D. 350		10	* 4404010116	ENSEMBLE COLLECTEUR D. 750	
7	* 4404010088	SOCLE FILTRE D. 450		10	* 4404010412	ENSEMBLE COLLECTEUR D. 900 FEMELLE	
7	* 4404010112	SOCLE FILTRE D. 500		11	* 4404010025	ENSEMBLE BRAS DE REPARTITEUR D. 400	
7	* 4404010113	SOCLE FILTRE D. 600		11	* 4404010026	ENSEMBLE BRAS DE REPARTITEUR	
7	* 4404300924	SOCLE FILTRE D 750		11	* 4404010028	ENSEMBLE BRAS DE REPARTITEUR D. 650	
7	* 4404010093	SOCLE FILTRE D. 950		11	* 4404010048	ENSEMBLE BRAS DE REPARTITEUR D. 750	

\* VOIR FICHE D'OBSERVATIONS

CODE **27092-0100, 27093-0100, 27094-0100, 27095-0100, 27096T-0100,  
27097-0100, 27098**

DESCRIPTION: **FILTRE ASTER DE COUVERCLE FILETÉ**

8	4404010108	PURGE D'EAU 3/8"	12	* 4404300917	BRAS DE REPARTITEUR 1" 110 M "
9	* 4404040103	RACCORD 1 1/2" + JOINT TORIQU "	12	* 4404300915	BRAS DE REPARTITEUR 1" 175 M "
9	* 4404040112	RACCORD SORTIE 2" + JOINT TORIQU "	12	* 4404300916	BRAS DE REPARTITEUR 1" 225 M "
12	* 4404290109	BRAS DE REPARTITEUR 1" 265 M/M "	16	* 4404010135	ENSEMBLE DIFFUSEUR ASTER D. 350
13	* 4404301003	PURGE AIR + TUBE L=670	16	* 4404010136	ENSEMBLE DIFFUSEUR ASTER D. 450
13	* 4404300707	TUBE RIGIDE L-845	16	* 4404010118	ENSEMBLE DIFFUSEUR D. 500
14	4404040108	PURGE D'AIR	16	* 4404010119	ENSEMBLE DIFFUSEUR D. 600
15	* 4404301004	DIFUSOR CONIQUE SUPÉRIOR D. 50	16	* 4404010137	ENSEMBLE DIFFUSEUR ASTER D. 650
15	* 4404300910	DIFUSOR CONIQUE SUPÉRIOR D. 63	16	* 4404010120	ENSEMBLE DIFFUSEUR D. 750
15	* 4404190324	DIFUSOR CONIQUE SUPÉRIOR D. 75	16	* 4404010127	ENSEMBLE DIFFUSEUR D. 900 - 2 ½" FEME

CODE **27092-0100, 27093-0100, 27094-0100, 27095-0100, 27096T-0100,  
27097-0100, 27098**

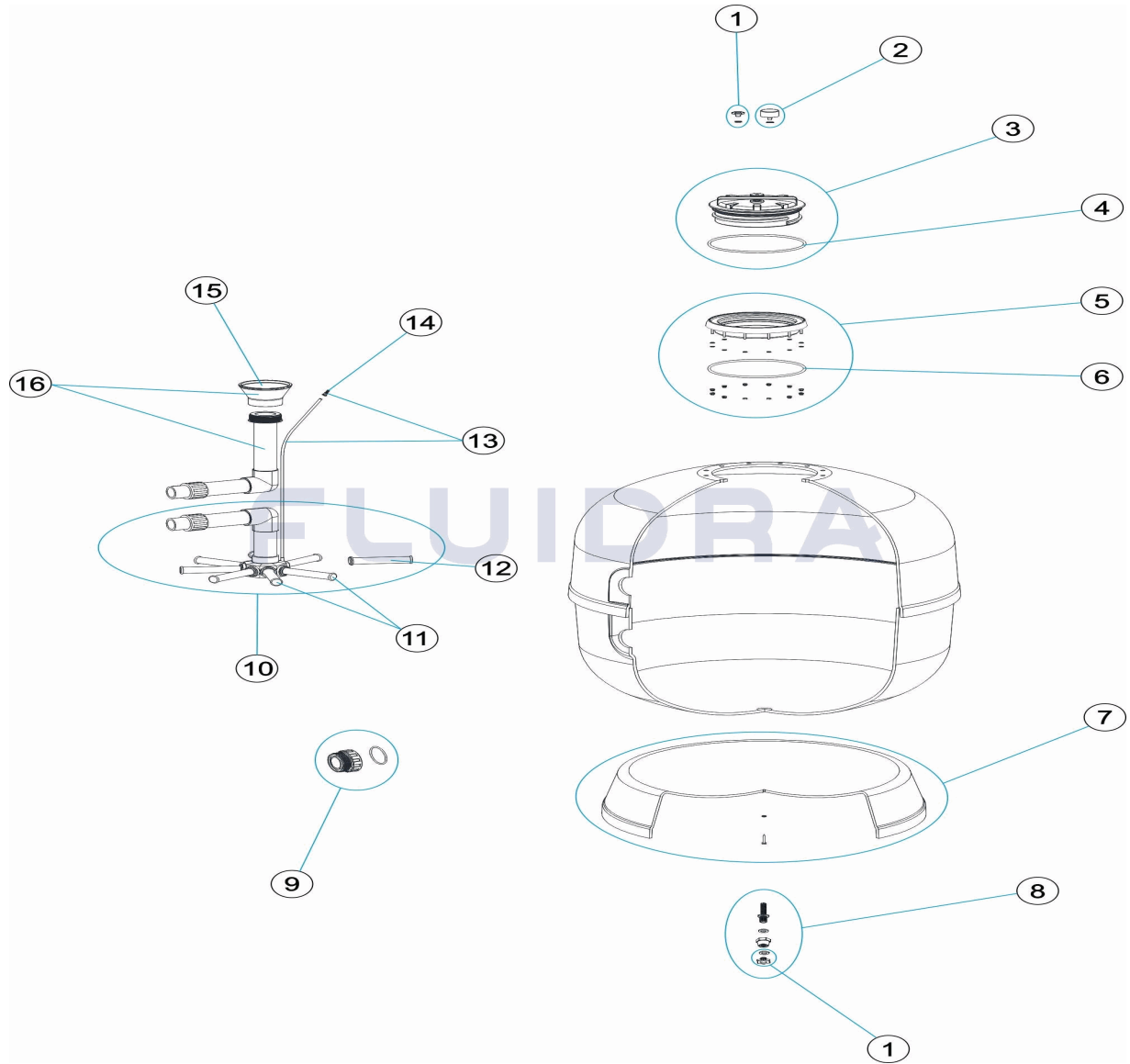
DESCRIPTION: **FILTRE ASTER DE COUVERCLE FILETÉ**

## OBSERVATIONS

POS	CODE	OBSERVATIONS
7	* 4404010040	POUR: 27092-0100
7	* 4404010088	POUR: 27093-0100
7	* 4404010112	POUR: 27094-0100
7	* 4404010113	POUR: 27095-0100, 27096T-0100
7	* 4404300924	POUR: 27097-0100
7	* 4404010093	POUR: 27098
9	* 4404040103	POUR: 27092-0100, 27093-0100, 27094-0100, 27095-0100, 27096T-0100
9	* 4404040112	POUR: 27097-0100
9	* 4404290108	POUR: 27098
10	* 4404010131	POUR: 27092-0100
10	* 4404010132	POUR: 27093-0100
10	* 4404010114	POUR: 27094-0100
10	* 4404010115	POUR: 27095-0100
10	* 4404010133	POUR: 27096T-0100
10	* 4404010116	POUR: 27097-0100
10	* 4404010412	POUR: 27098
11	* 4404010025	POUR: 27092-0100, 27093-0100, 27094-0100
11	* 4404010026	POUR: 27095-0100, 27096T-0100
11	* 4404010028	POUR: 27097-0100
11	* 4404010048	POUR: 27098
12	* 4404300917	POUR: 27092-0100 [4UT], 27093-0100 [4UT], 27094-0100 [4UT]
12	* 4404300915	POUR: 27095-0100 [4UT], 27096T-0100 [4UT]
12	* 4404300916	POUR: 27097-0100 [6UT]
12	* 4404290109	POUR: 27098 [6UT]
13	* 4404301003	POUR: 27092-0100, 27093-0100, 27094-0100, 27095-0100, 27096T-0100, 27097-0100
13	* 4404300707	POUR: 27098
15	* 4404301004	POUR: 27092-0100, 27093-0100, 27094-0100, 27095-0100, 27096T-0100
15	* 4404300910	POUR: 27097-0100
15	* 4404190324	POUR: 27098
16	* 4404010135	POUR: 27092-0100
16	* 4404010136	POUR: 27093-0100
16	* 4404010118	POUR: 27094-0100
16	* 4404010119	POUR: 27095-0100
16	* 4404010137	POUR: 27096T-0100
16	* 4404010120	POUR: 27097-0100
16	* 4404010127	POUR: 27098

CODE **27092-0100, 27093-0100, 27094-0100, 27095-0100, 27096T-0100, 27097-0100, 27098**

DESCRIPTION: **THREADED COVER ASTER FILTER**



**ENGLISH**

POS	CODE	DESCRIPTION	QUANTITY	POS	CODE	DESCRIPTION	QUANTITY
1	4404040113	DRAIN PLUG AND GASKET		9	* 4404290108	OUTLET UNION 2 1/2" + O-RIN "	
2	4404180405	PRESSURE GAUGE 1/8" 3 KG./C "		10	* 4404010131	MANIFOLD ASSEMBLY D. 350	
3	4404260201	FILTER LID		10	* 4404010132	MANIFOLD ASSEMBLY D. 450	
4	4404260202	LID GASKET		10	* 4404010114	MANIFOLD ASSEMBLY D. 500	
5	4404260205	LID RING UNIT		10	* 4404010115	MANIFOLD ASSEMBLY D. 600	
6	4404020116	O' RING 255X4		10	* 4404010133	MANIFOLD ASSEMBLY D. 650	
7	* 4404010040	FILTER BASE D. 350		10	* 4404010116	MANIFOLD ASSEMBLY D. 750	
7	* 4404010088	FILTER BASE D. 450		10	* 4404010412	MANIFOLD ASSEMBLY D. 900 FEMALE	
7	* 4404010112	FILTER BASE D. 500		11	* 4404010025	MANIFOLD ARM ASSEMBLY D. 400	
7	* 4404010113	FILTER BASE D. 600		11	* 4404010026	MANIFOLD ARM ASSEMBLY	
7	* 4404300924	FILTER BASE D. 750		11	* 4404010028	MANIFOLD ARM ASSEMBLY D. 650	
7	* 4404010093	FILTER BASE D. 950		11	* 4404010048	MANIFOLD ARM ASSEMBLY D. 750	

CODE                    **27092-0100, 27093-0100, 27094-0100, 27095-0100, 27096T-0100,  
27097-0100, 27098**

DESCRIPTION: **THREADED COVER ASTER FILTER**

8	4404010108	WATER PURGE 3/8"	12	* 4404300917	MANIFOLD ARM 1" 110 M "
9	* 4404040103	FITTING 1 1/2" + O'RIN "	12	* 4404300915	MANIFOLD ARM 1" 175 M "
9	* 4404040112	2" OUTLET FITTING + O'RIN "	12	* 4404300916	MANIFOLD ARM 1" 225 M "
12	* 4404290109	COLLECTOR ARM 1" 265 M "	16	* 4404010135	DIFFUSER ASSEMBLY ASTER D. 350
13	* 4404301003	AIR PURGE + PIPE L=670	16	* 4404010136	DIFFUSER ASSEMBLY ASTER D. 450
13	* 4404300707	RIGID PIPE L-845	16	* 4404010118	DIFFUSER ASSEMBLY D. 500
14	4404040108	AIR PURGE	16	* 4404010119	DIFFUSER ASSEMBLY D. 600
15	* 4404301004	DIFFUSER CONE D. 50	16	* 4404010137	DIFFUSER ASSEMBLY ASTER D. 650
15	* 4404300910	DIFFUSER CONE D. 63	16	* 4404010120	DIFFUSER ASSEMBLY D. 750
15	* 4404190324	DIFFUSER CONE D. 75	16	* 4404010127	DIFFUSER ASSEMBLY D. 900 2 1/2" FEMALE



CODE                    **27092-0100, 27093-0100, 27094-0100, 27095-0100, 27096T-0100,  
27097-0100, 27098**

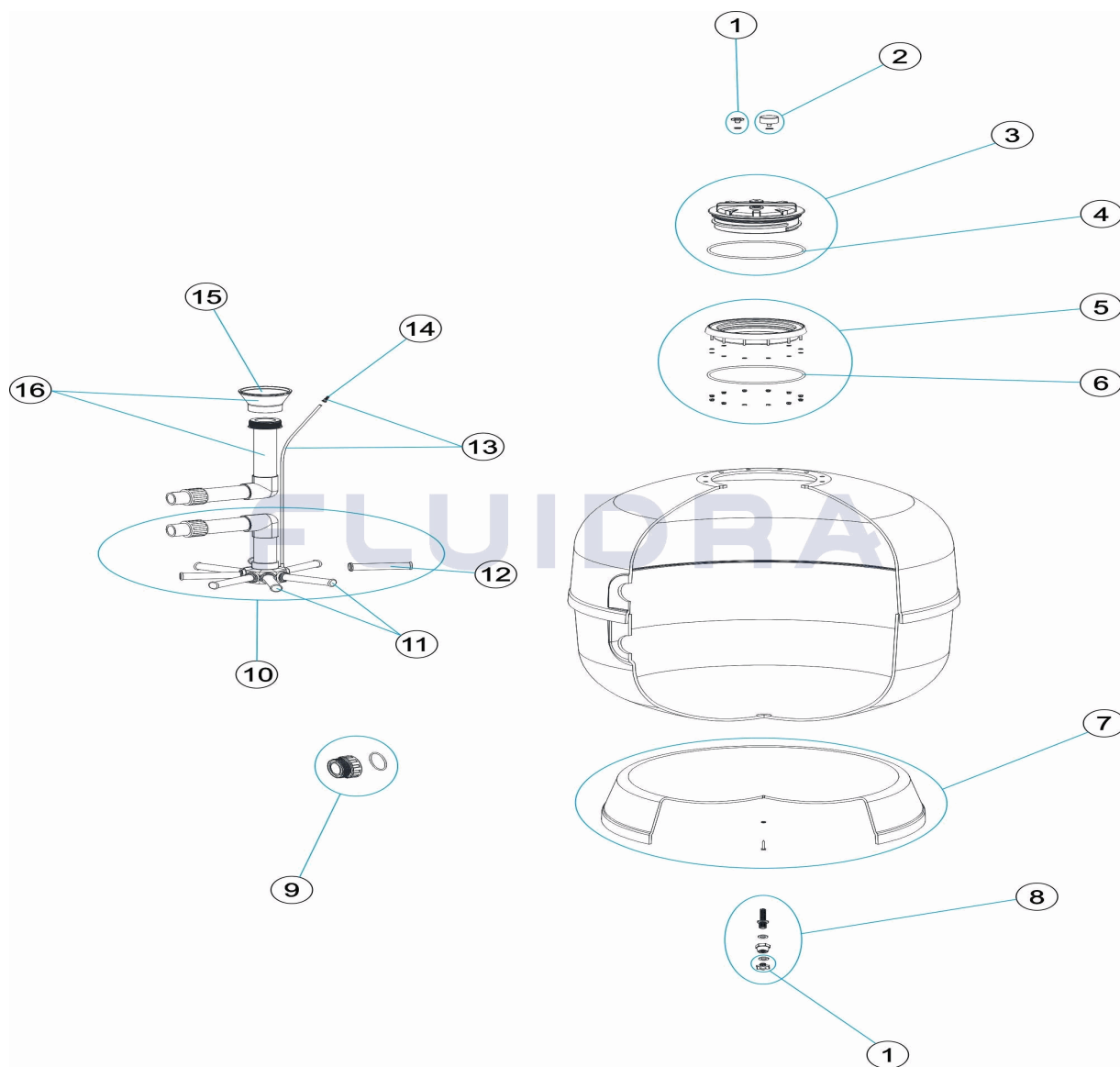
DESCRIPTION: **THREADED COVER ASTER FILTER**

## OBSERVATIONS

POS	CODE	OBSERVATIONS
7	* 4404010040	FOR: 27092-0100
7	* 4404010088	FOR: 27093-0100
7	* 4404010112	FOR: 27094-0100
7	* 4404010113	FOR: 27095-0100, 27096T-0100
7	* 4404300924	FOR: 27097-0100
7	* 4404010093	FOR: 27098
9	* 4404040103	FOR: 27092-0100, 27093-0100, 27094-0100, 27095-0100, 27096T-0100
9	* 4404040112	FOR: 27097-0100
9	* 4404290108	FOR: 27098
10	* 4404010131	FOR: 27092-0100
10	* 4404010132	FOR: 27093-0100
10	* 4404010114	FOR: 27094-0100
10	* 4404010115	FOR: 27095-0100
10	* 4404010133	FOR: 27096T-0100
10	* 4404010116	FOR: 27097-0100
10	* 4404010412	FOR: 27098
11	* 4404010025	FOR: 27092-0100, 27093-0100, 27094-0100
11	* 4404010026	FOR: 27095-0100, 27096T-0100
11	* 4404010028	FOR: 27097-0100
11	* 4404010048	FOR: 27098
12	* 4404300917	FOR: 27092-0100 [4UT], 27093-0100 [4UT], 27094-0100 [4UT]
12	* 4404300915	FOR: 27095-0100 [4UT], 27096T-0100 [4UT]
12	* 4404300916	FOR: 27097-0100 [6UT]
12	* 4404290109	FOR: 27098 [6UT]
13	* 4404301003	FOR: 27092-0100, 27093-0100, 27094-0100, 27095-0100, 27096T-0100, 27097-0100
13	* 4404300707	FOR: 27098
15	* 4404301004	FOR: 27092-0100, 27093-0100, 27094-0100, 27095-0100, 27096T-0100
15	* 4404300910	FOR: 27097-0100
15	* 4404190324	FOR: 27098
16	* 4404010135	FOR: 27092-0100
16	* 4404010136	FOR: 27093-0100
16	* 4404010118	FOR: 27094-0100
16	* 4404010119	FOR: 27095-0100
16	* 4404010137	FOR: 27096T-0100
16	* 4404010120	FOR: 27097-0100
16	* 4404010127	FOR: 27098

**CODICE** 27092-0100, 27093-0100, 27094-0100, 27095-0100, 27096T-0100, 27097-0100, 27098

**DESCRIZIONE:** TAPPO FILETTATO FILTRO ASTER



**ITALIANO**

POS	CODICE	DESCRIZIONE	QUANTITA'	POS	CODICE	DESCRIZIONE	QUANTITA'
1	4404040113	TAPPO SPURGO E GUARNIZIONE		9	* 4404290108	RACCORDO USCITA 2 1/2" + O-RIN "	
2	4404180405	MANOMETRO 1/8" 3 KG./C "		10	* 4404010131	KIT COLLETTORE D. 350	
3	4404260201	COPERCHIO FILTRO		10	* 4404010132	KIT COLLETTORE D. 450	
4	4404260202	GUARNIZIONE COPERCHIO		10	* 4404010114	KIT COLLETTORE D. 500	
5	4404260205	FLANGIA COPERCHIO COMPLETO		10	* 4404010115	KIT COLLETTORE D. 600	
6	4404020116	O-RING 255X4		10	* 4404010133	KIT COLLETTORE D. 650	
7	* 4404010040	BASE FILTRO D. 350		10	* 4404010116	KIT COLLETTORE D. 750	
7	* 4404010088	BASE FILTRO D. 450		10	* 4404010412	KIT COLLETTORE D. 900 FEMMINA	
7	* 4404010112	BASE FILTRO D. 500		11	* 4404010025	GRUPPO CANDELOTTO COLLECTORE D. 4	
7	* 4404010113	BASE FILTRO D.600		11	* 4404010026	GRUPPO CANDELOTTO COLLECTORE	
7	* 4404300924	BASE FILTRO D 750		11	* 4404010028	GRUPPO CANDELOTTO COLLECTORE D. 6	
7	* 4404010093	BASE FILTRO D. 950		11	* 4404010048	GRUPPO CANDELOTTO COLLECTORE D. 7	

**CODICE**                    **27092-0100, 27093-0100, 27094-0100, 27095-0100, 27096T-0100,**  
**27097-0100, 27098**

**DESCRIZIONE: TAPPO FILETTATO FILTRO ASTER**

8	4404010108	SCARICO ACQUA 3/8"	12	* 4404300917	CANDELOTTO COLLECTORE 1" 110 M "
9	* 4404040103	RACCORDO 1 1/2" + O-RIN "	12	* 4404300915	CANDELOTTO COLLECTORE 1" 175 M "
9	* 4404040112	RACCORDO USCITA 2" + O-RING	12	* 4404300916	CANDELOTTO COLLECTORE 1" 225 M "
12	* 4404290109	CANDELOTTO 1" 265 M/M "	16	* 4404010135	RACCORDO DIFFUSORE ASTER D. 350
13	* 4404301003	SPURGO ARIA + TUBO L=670	16	* 4404010136	RACCORDO DIFFUSORE ASTER D. 450
13	* 4404300707	TUBO RIGIDO L-845	16	* 4404010118	RACCORDO DIFFUSORE D. 500
14	4404040108	SFIATO ARIA	16	* 4404010119	RACCORDO DIFFUSORE D. 600
15	* 4404301004	CONO DIFFUSORE D. 50	16	* 4404010137	RACCORDO DIFFUSORE ASTER D. 650
15	* 4404300910	CONO DIFFUSORE D. 63	16	* 4404010120	RACCORDO DIFFUSORE D. 750
15	* 4404190324	CONO DIFFUSORE D. 75	16	* 4404010127	RACCORDO DIFFUSORE D. 900 - 2 1/2" FEMI

**CODICE**                    **27092-0100, 27093-0100, 27094-0100, 27095-0100, 27096T-0100,**  
**27097-0100, 27098**

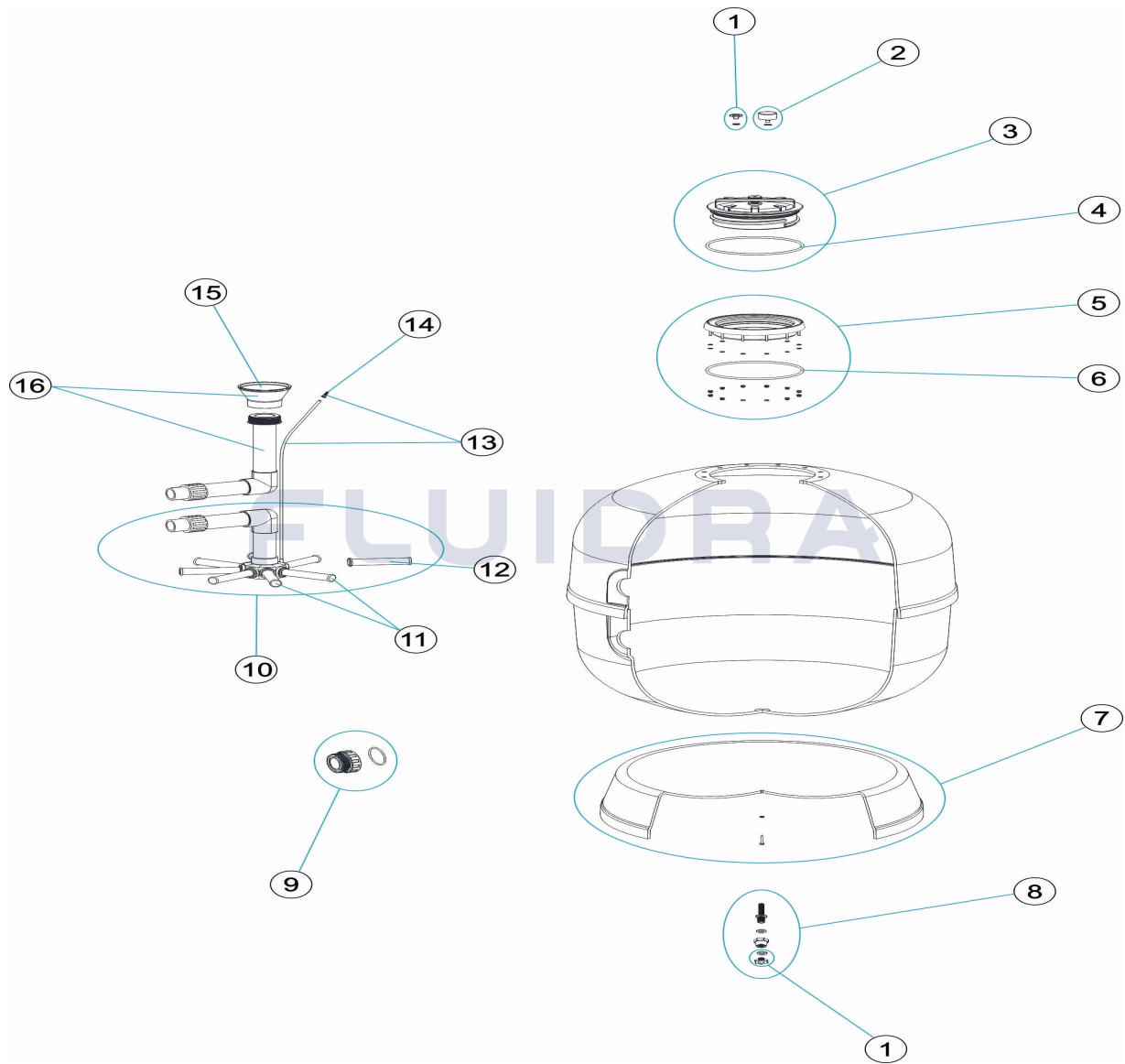
**DESCRIZIONE: TAPPO FILETTATO FILTRO ASTER**

## OSSERVAZIONI

POS	CODICE	OSSERVAZIONI
7	* 4404010040	PER: 27092-0100
7	* 4404010088	PER: 27093-0100
7	* 4404010112	PER: 27094-0100
7	* 4404010113	PER: 27095-0100, 27096T-0100
7	* 4404300924	PER: 27097-0100
7	* 4404010093	PER: 27098
9	* 4404040103	PER: 27092-0100, 27093-0100, 27094-0100, 27095-0100, 27096T-0100
9	* 4404040112	PER: 27097-0100
9	* 4404290108	PER: 27098
10	* 4404010131	PER: 27092-0100
10	* 4404010132	PER: 27093-0100
10	* 4404010114	PER: 27094-0100
10	* 4404010115	PER: 27095-0100
10	* 4404010133	PER: 27096T-0100
10	* 4404010116	PER: 27097-0100
10	* 4404010412	PER: 27098
11	* 4404010025	PER: 27092-0100, 27093-0100, 27094-0100
11	* 4404010026	PER: 27095-0100, 27096T-0100
11	* 4404010028	PER: 27097-0100
11	* 4404010048	PER: 27098
12	* 4404300917	PER: 27092-0100 [4UT], 27093-0100 [4UT], 27094-0100 [4UT]
12	* 4404300915	PER: 27095-0100 [4UT], 27096T-0100 [4UT]
12	* 4404300916	PER: 27097-0100 [6UT]
12	* 4404290109	PER: 27098 [6UT]
13	* 4404301003	PER: 27092-0100, 27093-0100, 27094-0100, 27095-0100, 27096T-0100, 27097-0100
13	* 4404300707	PER: 27098
15	* 4404301004	PER: 27092-0100, 27093-0100, 27094-0100, 27095-0100, 27096T-0100
15	* 4404300910	PER: 27097-0100
15	* 4404190324	PER: 27098
16	* 4404010135	PER: 27092-0100
16	* 4404010136	PER: 27093-0100
16	* 4404010118	PER: 27094-0100
16	* 4404010119	PER: 27095-0100
16	* 4404010137	PER: 27096T-0100
16	* 4404010120	PER: 27097-0100
16	* 4404010127	PER: 27098

CODE 27092-0100, 27093-0100, 27094-0100, 27095-0100, 27096T-0100, 27097-0100, 27098

BESCHREIBUNG: FILTER ASTER SCHRAUBVERSCHLUSS



**DEUTSCH**

POS	CODE	BESCHREIBUNG	MENGE	POS	CODE	BESCHREIBUNG	MENGE
1	4404040113	ABLASSSTOPFEN UND DICHTUNG		9	* 4404290108	GEWINDESTÜCK AUSGANG 2 1/2" UND O-F	
2	4404180405	MANOMETER 1/8" 3 KG/C "		10	* 4404010131	SAMMELROHRSET D. 350	
3	4404260201	FILTERDECKEL		10	* 4404010132	SAMMELROHRSET D. 450	
4	4404260202	DICHTUNG ABDECKUNG		10	* 4404010114	SAMMELROHRSET D. 500	
5	4404260205	RING ABDECKUNG KOMPLETT		10	* 4404010115	SAMMELROHRSET D. 600	
6	4404020116	O-RING 255 X 4		10	* 4404010133	SAMMELROHRSET D. 650	
7	* 4404010040	FILTERFUSS D. 350		10	* 4404010116	SAMMELROHRSET D. 750	
7	* 4404010088	FILTERFUSS D. 450		10	* 4404010412	SAMMELROHRSET D. 900 WEIBLICHEM GE	
7	* 4404010112	FILTERFUSS D. 500		11	* 4404010025	SET FILTERSTERN-SCHLITZROHR D. 400	
7	* 4404010113	FILTERFUSS D. 600		11	* 4404010026	SET FILTERSTERN-SCHLITZROHR	
7	* 4404300924	FILTERFUSS D. 750		11	* 4404010028	SET FILTERSTERN-SCHLITZROHR D. 650	
7	* 4404010093	FILTERFUSS D. 950		11	* 4404010048	SET FILTERSTERN-SCHLITZROHR D. 750	

CODE **27092-0100, 27093-0100, 27094-0100, 27095-0100, 27096T-0100,  
27097-0100, 27098**

BESCHREIBUNG: **FILTER ASTER SCHRAUBVERSCHLUSS**

8	4404010108	WASSERABLAUSS 3/8"	12	* 4404300917	FILTERSTERN-SCHLITZROHR 1" 110 M "
9	* 4404040103	GEWINDESTÜCK 1 1/2" UND O-RIN "	12	* 4404300915	FILTERSTERN-SCHLITZROHR 1" 175 M "
9	* 4404040112	GEWINDESTÜCK AUSGANG 2" UND O-RIN	12	* 4404300916	FILTERSTERN-SCHLITZROHR 1" 225 M "
12	* 4404290109	FILTERSTERN-SCHLITZROHR 1" 265 M "	16	* 4404010135	SET WASSERVERTEILER ASTER 350
13	* 4404301003	ENTLÜFTUNG UND ROHR L=670	16	* 4404010136	SET WASSERVERTEILER ASTER 450
13	* 4404300707	ROHR HART L - 845	16	* 4404010118	SET WASSERVERTEILER D. 500
14	4404040108	ENTLÜFTUNG	16	* 4404010119	SET WASSERVERTEILER D. 600
15	* 4404301004	KEGEL WASSERVERTEILER D. 50	16	* 4404010137	SET WASSERVERTEILER ASTER 650
15	* 4404300910	KEGEL WASSERVERTEILER D. 63	16	* 4404010120	SET WASSERVERTEILER D. 750
15	* 4404190324	KEGEL WASSERVERTEILER D. 75	16	* 4404010127	SET WASSERVERTEILER D. 900 - 2 1/2" WEIß

CODE **27092-0100, 27093-0100, 27094-0100, 27095-0100, 27096T-0100,  
27097-0100, 27098**

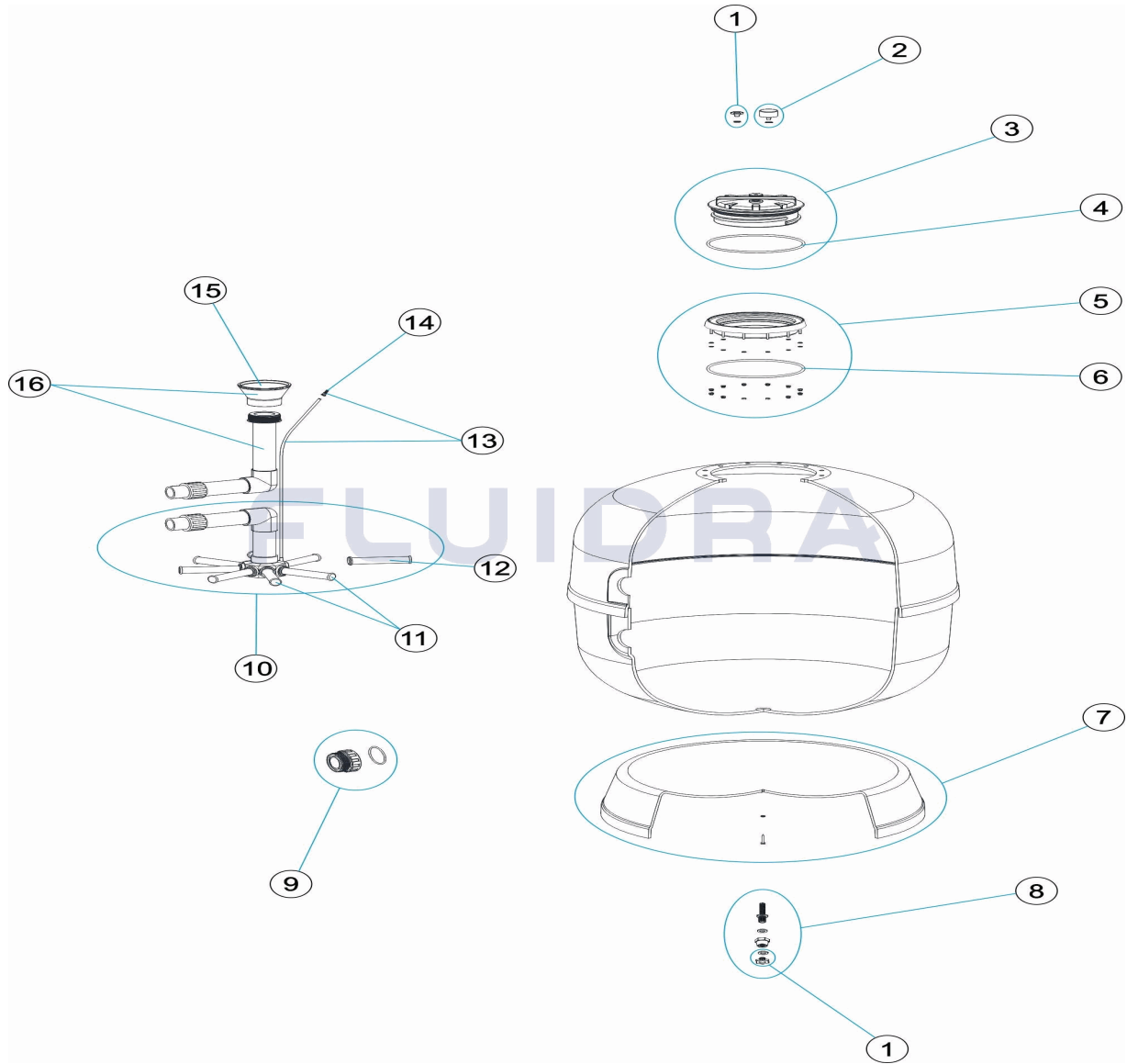
BESCHREIBUNG: **FILTER ASTER SCHRAUBVERSCHLUSS**

## HINWEISE

POS	CODE	HINWEISE
7	* 4404010040	FÜR: 27092-0100
7	* 4404010088	FÜR: 27093-0100
7	* 4404010112	FÜR: 27094-0100
7	* 4404010113	FÜR: 27095-0100, 27096T-0100
7	* 4404300924	FÜR: 27097-0100
7	* 4404010093	FÜR: 27098
9	* 4404040103	FÜR: 27092-0100, 27093-0100, 27094-0100, 27095-0100, 27096T-0100
9	* 4404040112	FÜR: 27097-0100
9	* 4404290108	FÜR: 27098
10	* 4404010131	FÜR: 27092-0100
10	* 4404010132	FÜR: 27093-0100
10	* 4404010114	FÜR: 27094-0100
10	* 4404010115	FÜR: 27095-0100
10	* 4404010133	FÜR: 27096T-0100
10	* 4404010116	FÜR: 27097-0100
10	* 4404010412	FÜR: 27098
11	* 4404010025	FÜR: 27092-0100, 27093-0100, 27094-0100
11	* 4404010026	FÜR: 27095-0100, 27096T-0100
11	* 4404010028	FÜR: 27097-0100
11	* 4404010048	FÜR: 27098
12	* 4404300917	FÜR: 27092-0100 [4UT], 27093-0100 [4UT], 27094-0100 [4UT]
12	* 4404300915	FÜR: 27095-0100 [4UT], 27096T-0100 [4UT]
12	* 4404300916	FÜR: 27097-0100 [6UT]
12	* 4404290109	FÜR: 27098 [6UT]
13	* 4404301003	FÜR: 27092-0100, 27093-0100, 27094-0100, 27095-0100, 27096T-0100, 27097-0100
13	* 4404300707	FÜR: 27098
15	* 4404301004	FÜR: 27092-0100, 27093-0100, 27094-0100, 27095-0100, 27096T-0100
15	* 4404300910	FÜR: 27097-0100
15	* 4404190324	FÜR: 27098
16	* 4404010135	FÜR: 27092-0100
16	* 4404010136	FÜR: 27093-0100
16	* 4404010118	FÜR: 27094-0100
16	* 4404010119	FÜR: 27095-0100
16	* 4404010137	FÜR: 27096T-0100
16	* 4404010120	FÜR: 27097-0100
16	* 4404010127	FÜR: 27098

**CODIGO** 27092-0100, 27093-0100, 27094-0100, 27095-0100, 27096T-0100, 27097-0100, 27098

**DESCRIÇÃO:** FILTRO ASTER TAMPA ROSCADA



**PORTUGUES**

POS	CODIGO	DESCRIÇÃO	JANTIDADE	POS	CODIGO	DESCRIÇÃO	JANTIDADE
1	4404040113	TAMPÃO PURGA E JUNTA		9	* 4404290108	RACORD DE SAIDA 2 1/2" + JUNTA TÓRIC "	
2	4404180405	MANOMETRO 1/8" 3 KG./C "		10	* 4404010131	CJTO. COLECTOR D. 350	
3	4404260201	TAMPA FILTRO		10	* 4404010132	CJTO. COLECTOR D. 450	
4	4404260202	JUNTA TAMPA		10	* 4404010114	CJTO. COLECTOR D. 500	
5	4404260205	ARO TAMPA COMPLETO		10	* 4404010115	CJTO. COLECTOR D. 600	
6	4404020116	JUNTA TÓRICA 255X4		10	* 4404010133	CJTO. COLECTOR D. 650	
7	* 4404010040	PÉ FILTRO D. 350		10	* 4404010116	CJTO. COLECTOR D. 750	
7	* 4404010088	PÉ FILTRO D. 450		10	* 4404010412	CJTO. COLECTOR D. 900 T. FÊMEA	
7	* 4404010112	PÉ FILTRO D. 500		11	* 4404010025	CJTO. BRAÇO COLECTOR D. 400	
7	* 4404010113	PÉ FILTRO D. 600		11	* 4404010026	CJTO. BRAÇO COLECTOR	
7	* 4404300924	PÉ FILTRO D 750		11	* 4404010028	CJTO. BRAÇO COLECTOR D.650	
7	* 4404010093	PÉ FILTRO D. 950		11	* 4404010048	CJTO. BRAÇO COLECTOR D. 750	

**\* VEJA A FICHA DE OBSERVAÇÕES**



**CODIGO**                    **27092-0100, 27093-0100, 27094-0100, 27095-0100, 27096T-0100,**  
**27097-0100, 27098**

**DESCRIÇÃO: FILTRO ASTER TAMPA ROSCADA**

8	4404010108	PURGA AGUA 3/8"	12	* 4404300917	BRAÇO COLECTOR 1" 110 M "
9	* 4404040103	RACORD 1 1/2" JUNTA TORIC "	12	* 4404300915	BRAÇO COLECTOR 1" 175 M "
9	* 4404040112	ACOPLADOR SAÍDA 2" + JUNTA TORIC "	12	* 4404300916	BRAÇO COLECTOR 1" 225 M "
12	* 4404290109	BRAÇO COLECTOR 1" 265 M/M "	16	* 4404010135	CJTO. DIFUSOR ASTER D. 350
13	* 4404301003	PURGAAR + TUBO L=670	16	* 4404010136	CJTO. DIFUSOR ASTER D. 450
13	* 4404300707	TUBO RÍGIDO L-845	16	* 4404010118	CJTO. DIFUSOR D. 500
14	4404040108	PURGA AREIA	16	* 4404010119	CJTO. DIFUSOR D. 600
15	* 4404301004	CONO DIFUSOR D. 50	16	* 4404010137	CJTO. DIFUSOR ASTER D. 650
15	* 4404300910	CONO DIFUSOR D. 63	16	* 4404010120	CJTO. DIFUSOR D. 750
15	* 4404190324	CONO DIFUSOR D. 75	16	* 4404010127	CJTO. DIFUSOR D. 900 - 2 1/2" T. FÊMEA

**CODIGO**                    **27092-0100, 27093-0100, 27094-0100, 27095-0100, 27096T-0100, 27097-0100, 27098**

**DESCRIÇÃO: FILTRO ASTER TAMPA ROSCADA**

## OBSERVAÇÕES

POS	CODIGO	OBSERVAÇÕES
7	* 4404010040	PARA: 27092-0100
7	* 4404010088	PARA: 27093-0100
7	* 4404010112	PARA: 27094-0100
7	* 4404010113	PARA: 27095-0100, 27096T-0100
7	* 4404300924	PARA: 27097-0100
7	* 4404010093	PARA: 27098
9	* 4404040103	PARA: 27092-0100, 27093-0100, 27094-0100, 27095-0100, 27096T-0100
9	* 4404040112	PARA: 27097-0100
9	* 4404290108	PARA: 27098
10	* 4404010131	PARA: 27092-0100
10	* 4404010132	PARA: 27093-0100
10	* 4404010114	PARA: 27094-0100
10	* 4404010115	PARA: 27095-0100
10	* 4404010133	PARA: 27096T-0100
10	* 4404010116	PARA: 27097-0100
10	* 4404010412	PARA: 27098
11	* 4404010025	PARA: 27092-0100, 27093-0100, 27094-0100
11	* 4404010026	PARA: 27095-0100, 27096T-0100
11	* 4404010028	PARA: 27097-0100
11	* 4404010048	PARA: 27098
12	* 4404300917	PARA: 27092-0100 [4UT], 27093-0100 [4UT], 27094-0100 [4UT]
12	* 4404300915	PARA: 27095-0100 [4UT], 27096T-0100 [4UT]
12	* 4404300916	PARA: 27097-0100 [6UT]
12	* 4404290109	PARA: 27098 [6UT]
13	* 4404301003	PARA: 27092-0100, 27093-0100, 27094-0100, 27095-0100, 27096T-0100, 27097-0100
13	* 4404300707	PARA: 27098
15	* 4404301004	PARA: 27092-0100, 27093-0100, 27094-0100, 27095-0100, 27096T-0100
15	* 4404300910	PARA: 27097-0100
15	* 4404190324	PARA: 27098
16	* 4404010135	PARA: 27092-0100
16	* 4404010136	PARA: 27093-0100
16	* 4404010118	PARA: 27094-0100
16	* 4404010119	PARA: 27095-0100
16	* 4404010137	PARA: 27096T-0100
16	* 4404010120	PARA: 27097-0100
16	* 4404010127	PARA: 27098