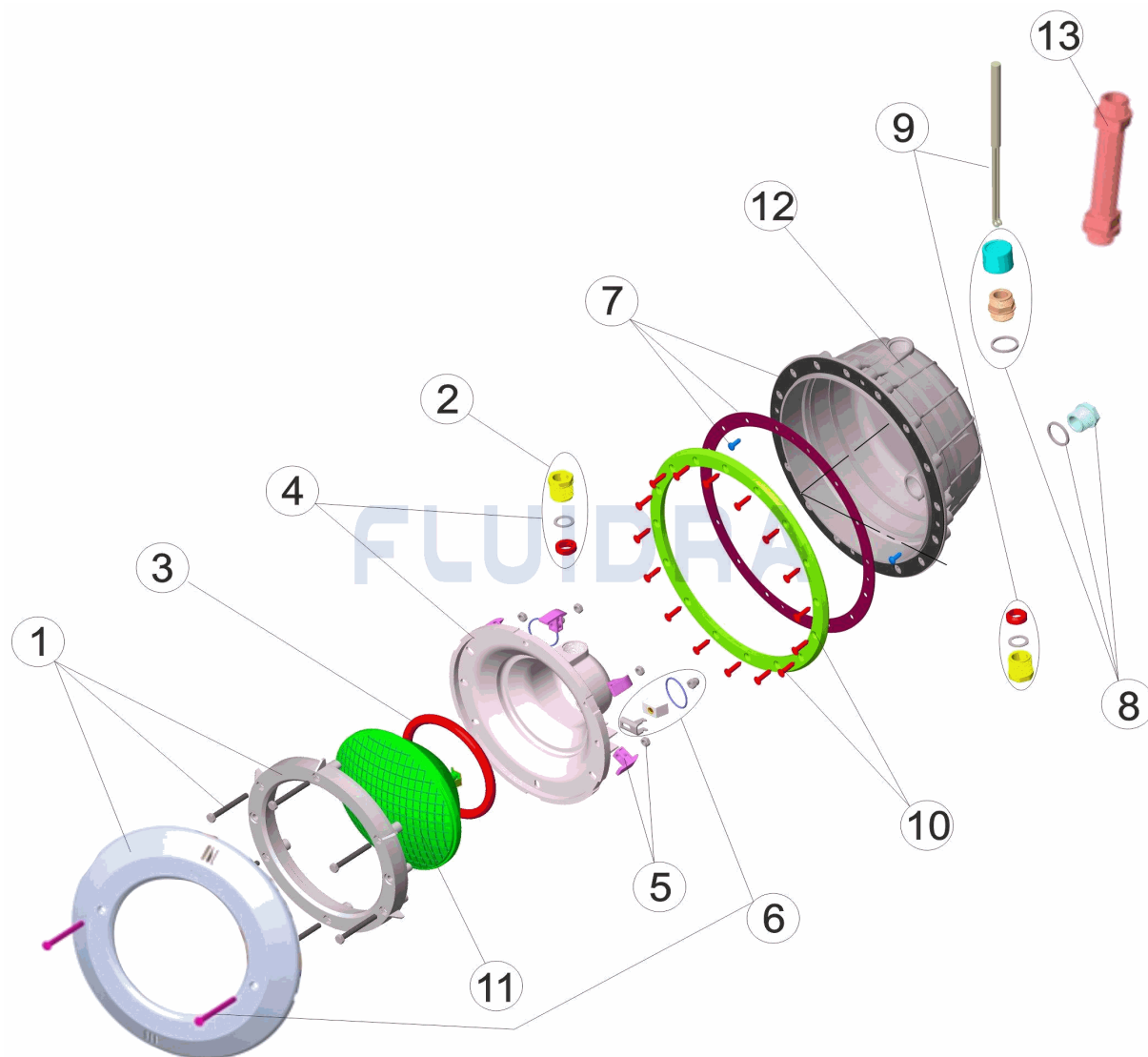


CODIGO **07667**

DESCRIPCION: **PROYECTOR STD.NICHO PP. EMB. BLANCO / CABLE / PASACABLE**

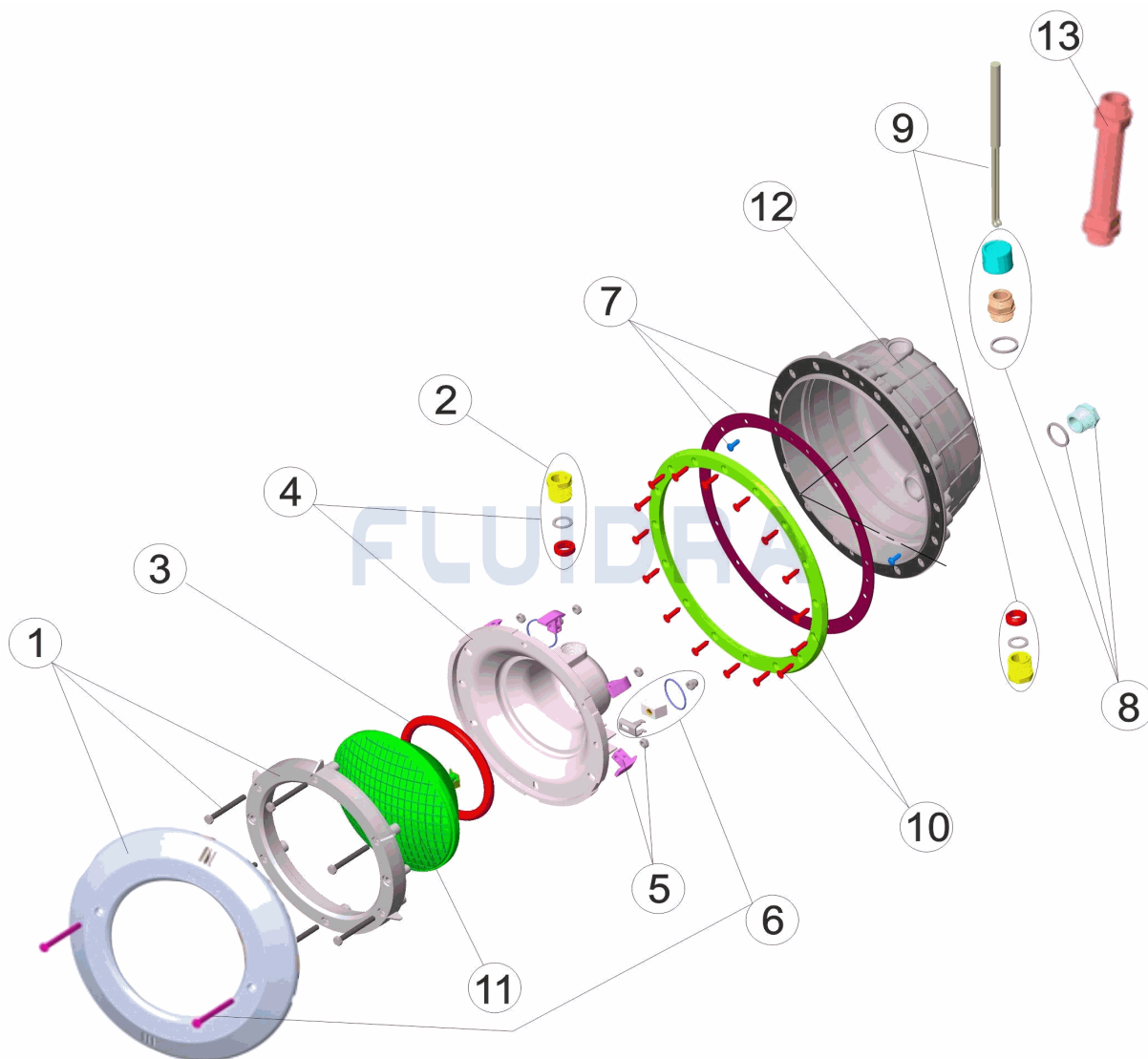


ESPAÑOL

POS	CODIGO	DESCRIPCION	CANTIDAD	POS	CODIGO	DESCRIPCION	CANTIDAD
1	4403010302	ARO BLANCO PROYECTOR		8	4403010313	PRENSAESTOPAS CUERPO PROYECTOR I	
2	4403010312	PRENSAESTOPAS FOCO PROYECTOR M-2		9	4403010314	CABLE PROYECTOR M-25 HALOGENO	
3	4403010304	JUNTA TORICA PROYECTOR		10	4403010401	BRIDA FIJACION ANCHA PROY.STD.	
4	4403010305	FONDO FOCO PROYECTOR HALOGENO		11	00370IP112	LAMPARA 300W 12V.	
5	4403010306	CLIP FIJACION PROYECTOR		12	07667R0100	NICHO PROYECTOR	
6	4403015002	CJTO. FIJACION PROYECTOR JELLY STD..		13	4403010059	MANGUERA PASACABLES M-25 3/4"	
7	4403013507	JUNTAADHESIVA PROYECTOR					

CODE 07667

DESCRIPTION: PROJECTEUR PLAT PISCINE PRÉFABRIQUÉE

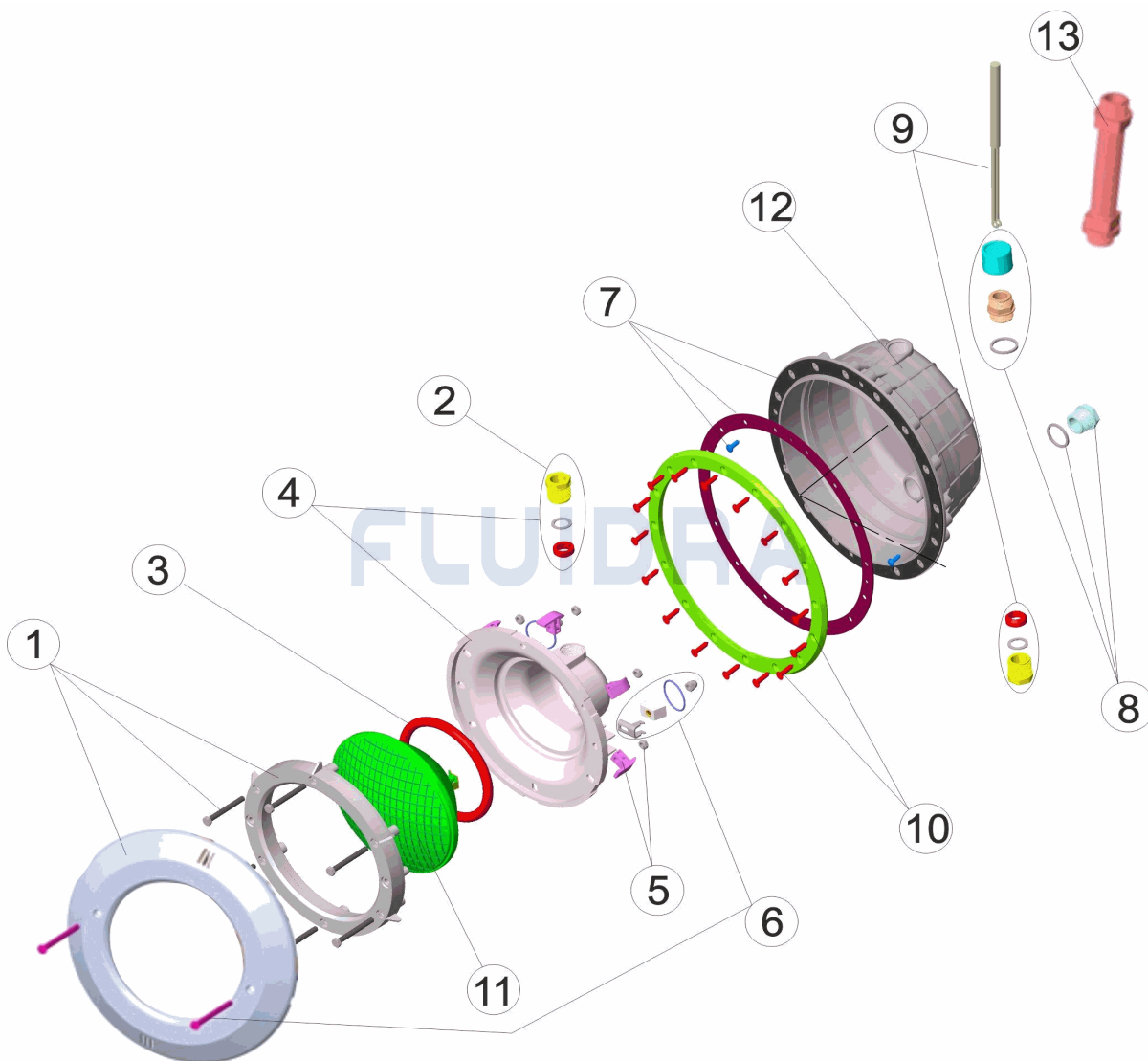


FRANCAIS

POS	CODE	DESCRIPTION	QUANTITE	POS	CODE	DESCRIPTION	QUANTITE
1	4403010302	ENJOLIVEUR BLANC DE PROJECTEUR		8	4403010313	CORPS PRESSE ETOUPE M-25	
2	4403010312	PRESSE ETOUPE PROJECTEUR M-25		9	4403010314	CABLE PROJECTEUR M-25	
3	4403010304	JOINT TORIQUE PROJECTEUR		10	4403010401	BRIDE FIXATION PROJECTEUR	
4	4403010305	NICHE D'AMPOULE DE PROJECTEUR		11	00370IP112	LAMPE	
5	4403010306	CLIP FIXATION PROJECTEUR		12	07667R0100	NICHE PROJECTEUR	
6	4403015002	ENSEMBLE FIXATION PROJECTEUR JELLY		13	4403010059	TUYAU ANNEAU M-25	
7	4403013507	JOINT ADHESIF PROJECTEUR					

CODE **07667**

DESCRIPTION: **FLAT LIGHT PREFABRICATED POOL**

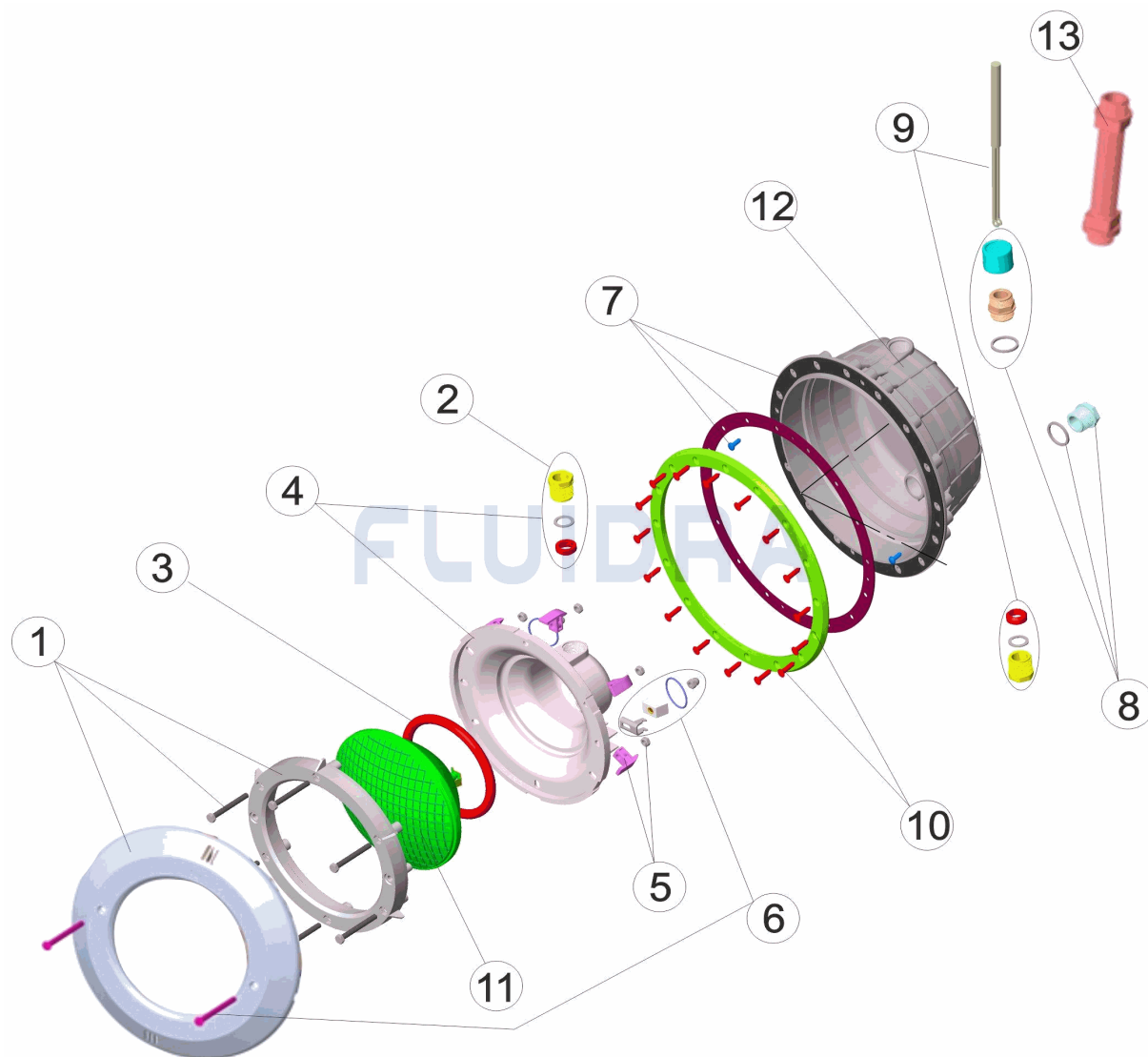


ENGLISH

POS	CODE	DESCRIPTION	QUANTITY	POS	CODE	DESCRIPTION	QUANTITY
1	4403010302	WHITE FACEPLATE		8	4403010313	BODY PACKING GLAND M-25	
2	4403010312	PACKING GLAND M-25		9	4403010314	LIGHT CABLE M-25	
3	4403010304	LIGHT O RING		10	4403010401	LIGHT FIXING FLANGE	
4	4403010305	BACK COVER		11	00370IP112	LIGHTBULB	
5	4403010306	LIGHT FIXING CLIP		12	07667R0100	FLOODLAMP HOUSING	
6	4403015002	FIXING SET UNDERWATER LIGHT JELLY S'		13	4403010059	HOSE CONDUIT M-25	
7	4403013507	LIGHT ADHESIVE GASKET					

CODICE **07667**

DESCRIZIONE: **PROIETTORE PIANO PISCINA PREFABBRICATA**

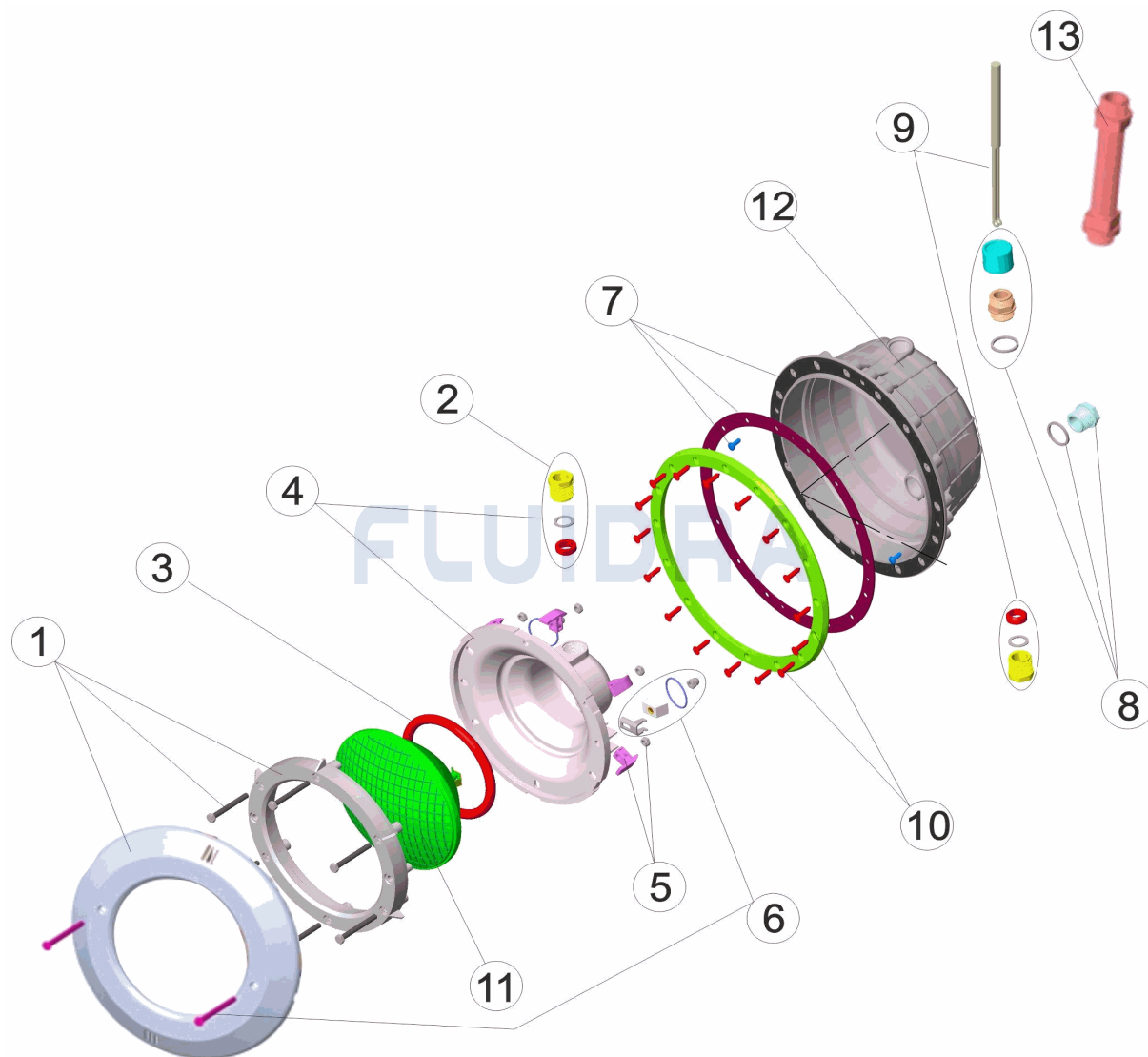


ITALIANO

POS	CODICE	DESCRIZIONE	QUANTITA'	POS	CODICE	DESCRIZIONE	QUANTITA'
1	4403010302	FLANGIA BIANCA FARO		8	4403010313	PRESSACAVI CORPO M-25	
2	4403010312	PRESSACAVI M-25		9	4403010314	CABLE PROJECTEUR M-25	
3	4403010304	O-RING FARO		10	4403010401	FLANGIA FISSAGGIO FARO	
4	4403010305	COPPA FARO		11	00370IP112	LAMPADINA	
5	4403010306	CLIP FISSAGGIO FARO		12	07667R0100	NICCHIA PROIETTORE	
6	4403015002	KIT FISSAGGIO PROIETTORE JELLY STD. /		13	4403010059	TUBO PASSACAVO M-25	
7	4403013507	GUARNIZIONE ADESIVA FARO					

CODE **07667**

BESCHREIBUNG: **UWS STD.EINBAUTOPF PP. BLENDE WEISS / KABEL / KABELDURCHFÜ**

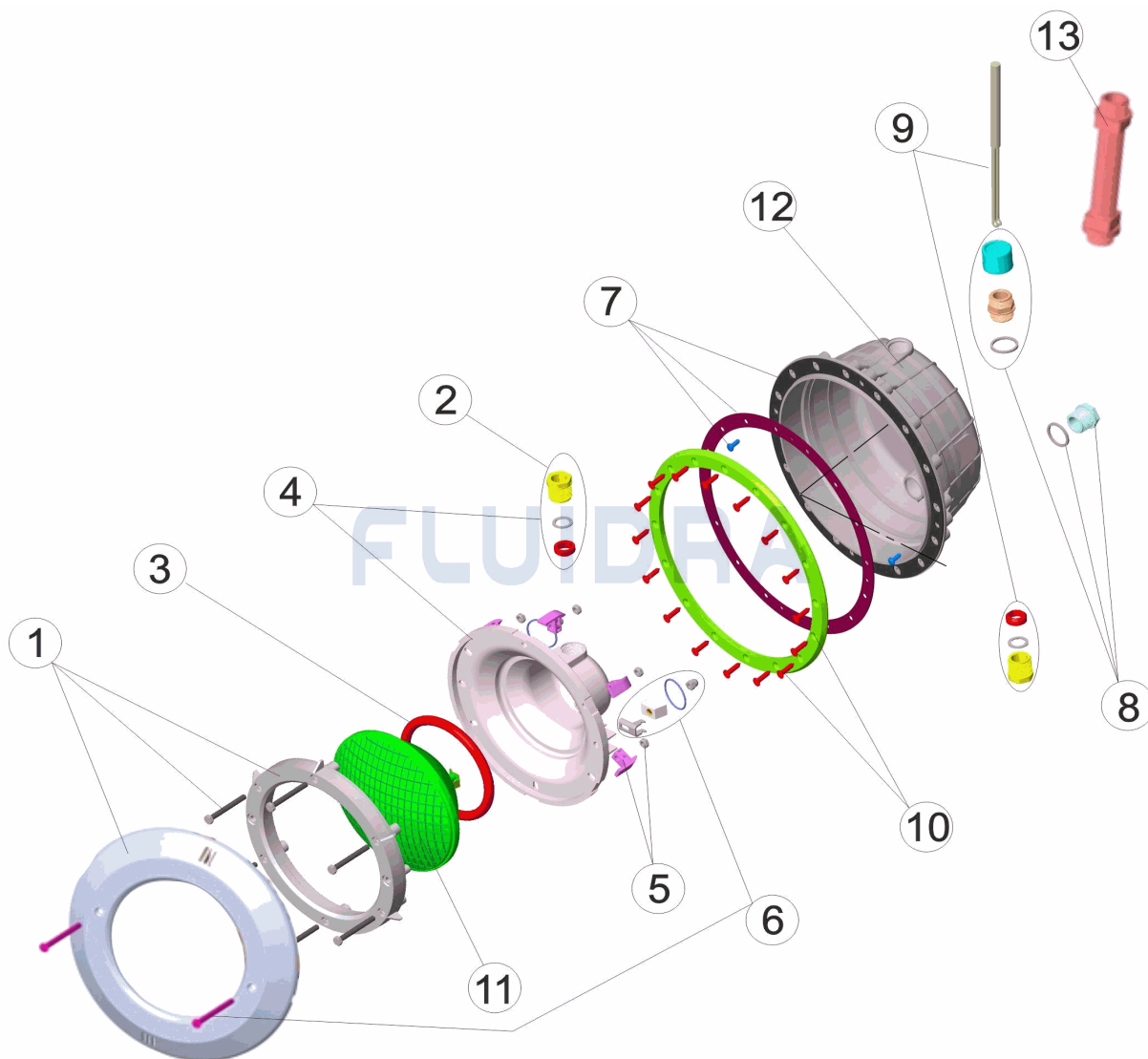


DEUTSCH

POS	CODE	BESCHREIBUNG	MENGE	POS	CODE	BESCHREIBUNG	MENGE
1	4403010302	RING WEISS UWS		8	4403010313	QUETSCHVERSCHRAUBUNG GEHÄUSE UV	
2	4403010312	QUETSCHVERSCHRAUBUNG LAMPE UWS		9	4403010314	UWS-KABEL M-25 HALOGEN	
3	4403010304	O-RING UWS		10	4403010401	BEFESTIGUNGSFLANSCH BREIT UWS STD	
4	4403010305	BASIS UWS HALOGEN		11	00370IP112	LAMPE PAR 56 12 V 300 W	
5	4403010306	FIXIERCLIP UWS		12	07667R0100	EINBAUTOPF UWS	
6	4403015002	FIXIERSET UWS JELLY STD. A2		13	4403010059	SCHLAUCH KABELDURCHFÜHRUNG M-25 :	
7	4403013507	DICHTUNG SELBSTKLEBEND UWS					

CODIGO **07667**

DESCRIÇÃO: **PROJECTOR PLANO PISCINA PRÉ-FABRICADA**



PORTUGUES

POS	CODIGO	DESCRIÇÃO	JANTIDADE	POS	CODIGO	DESCRIÇÃO	JANTIDADE
1	4403010302	ARO BRANCO PROJECTOR		8	4403010313	BUCIN CORPO M-25	
2	4403010312	BUCIN FOCO M-25		9	4403010314	CABO PROJECTOR M-25	
3	4403010304	JUNTA TÓRICA PROJECTOR		10	4403010401	FLANGE FIXAÇÃO PROJECTOR	
4	4403010305	FUNDO FOCO PROJECTOR		11	00370IP112	BOMBILHA	
5	4403010306	CLIP FIXAÇÃO PROJECTOR		12	07667R0100	NICHO PROJECTOR	
6	4403015002	CONJUNTO FIXAÇÃO PROJECTOR JELLY S		13	4403010059	MANGUEIRA ANILHA M-25	
7	4403013507	JUNTA ADESIVA PROJECTOR					