



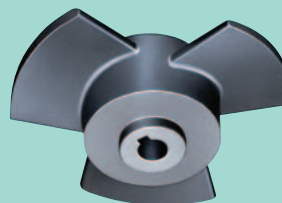
# *Submersible Propeller Pumps* **AB**

**Realization of low pump head and large water volume by use of an axial-flow impeller**



## **Applications**

- Water circulation for oxygen replenishing and water supply and drainage in fishponds.
- Irrigation of rice fields etc.
- Drainage of large water volumes with improvement work for irrigation ditches etc.
- Transport to bypass waterways
- Water supply and drainage for pools, ponds, etc.



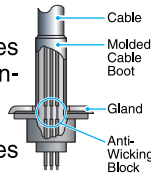
**Aménics**  
Amenities from Technology  
for People and The Earth

# Power-saving type providing a large discharge volume with low-head specifications.

## Features

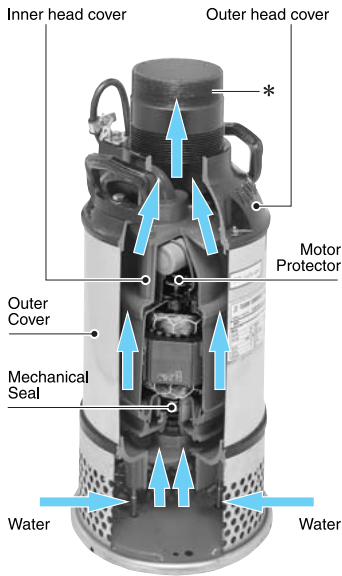
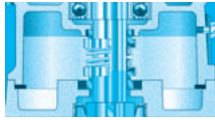
### Anti-wicking Block

Gaps between lead cores are sealed to prevent ingress of water into the motor caused by water traveling along lead cores by capillary action.



### Dual Inside Mechanical Shaft Seal

A double-face mechanical seal is located in an oil chamber and is lubricated and cooled by the oil. Unlike systems in which a mechanical seal is installed in the pump casing, the seal does not rely on lubrication by the pumped media. This eliminates premature wear or corrosion of the seal caused by lubrication of pumped media.

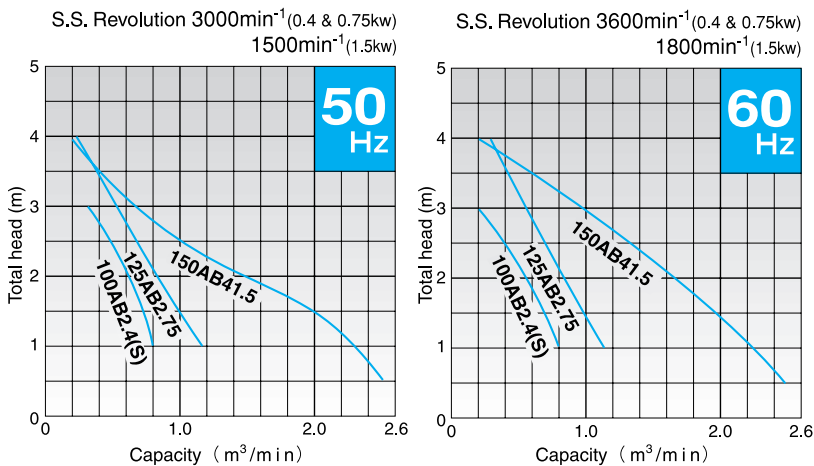


\* not supplied with pump

## Major Standard Specifications

Item	Discharge bore size mm			
	100	125	150	
Pumping fluid	Type of fluid	River water, Agricultural water		
	Liquid temperature	0~40°C		
Pump	Components	Impeller	Axial-flow	
		Shaft seal	Double mechanical seal	
	Materials	Bearing	Shielded ball bearing	
		Impeller	Gray iron casting	
		Outer cover	Stainless steel #304	
Motor	Head cover	Gray iron casting		
	Casing	Gray iron casting		
Motor	Shaft seal (mechanical seal)	Top seal face: Ceramic + Carbon, Bottom seal face: Ceramic + Silicon Carbide (0.4, 0.75kw) Silicon Carbide + Silicon Carbide (1.5kw)		
		Type, poles	Dry-type submersible induction motor, 2 and 4 poles	
	Insulation	Class E		
	Phase / Voltage	Single-phase /110V, 115V, 220V, 230V, 240V Three-phase /220V, 230V, 380V, 400V, 415V, 440V, 460V		
	Motor protector (Built-in)	Circle thermal protector		
	Lubricant	Turbine oil (ISO VG32)		
	Materials	Frame	Steel plate, Gray iron casting (1.5kw)	
Head cover		Aluminum alloy casting, Gray iron casting (1.5kw)		
Shaft		Stainless steel #403		
Cable		PVC Sheath		
Discharge connection	Parallel pipe threads			

## Performance curves



## Specifications 50/60Hz

Discharge Bore (mm)	Model	Motor Output (kW)	Phase	Starting Method	Revolution 50Hz / 60Hz (min <sup>-1</sup> )	Max. Head (m)	Max. Capacity (m <sup>3</sup> /min)	Dry Weight (kg)	Standard Cable Length (m)	Dimensions (mm)		
										D	H	W1
100	100AB2.4S	0.4	Single	Capacitor Start	3000/3600	3	0.8	18	5	250	475	180
100	100AB2.4	0.4	Three	D.O.L.	3000/3600	3	0.8	18	5	250	475	180
125	125AB2.75	0.75	Three	D.O.L.	3000/3600	4	1.1	19	5	250	475	180
150	150AB41.5	1.5	Three	D.O.L.	1500/1800	4	2.5	44	6	272	580	300

• Dry weight of the pump excluding cable.

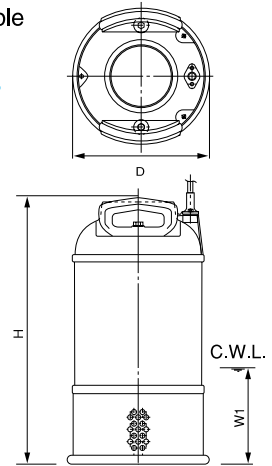
## Standard Accessories

- Cabtyre cable..... 1pc

## Optional Specifications

- Extended cable

## Dimensions



C. W. L. :  
Continuous Running Water Level

We reserve the right to change the specifications and designs for improvement without prior notice.

**TSURUMI**  
MANUFACTURING CO.,LTD.

Your Dealer

Chainaris Phuket Engineering Co., Ltd.  
63/13 Moo.2, T.Vichit, A.Muang Phuket 83000  
Tel. 076-513100-3 Fax. 076-513105  
www.chainaris.co.th

