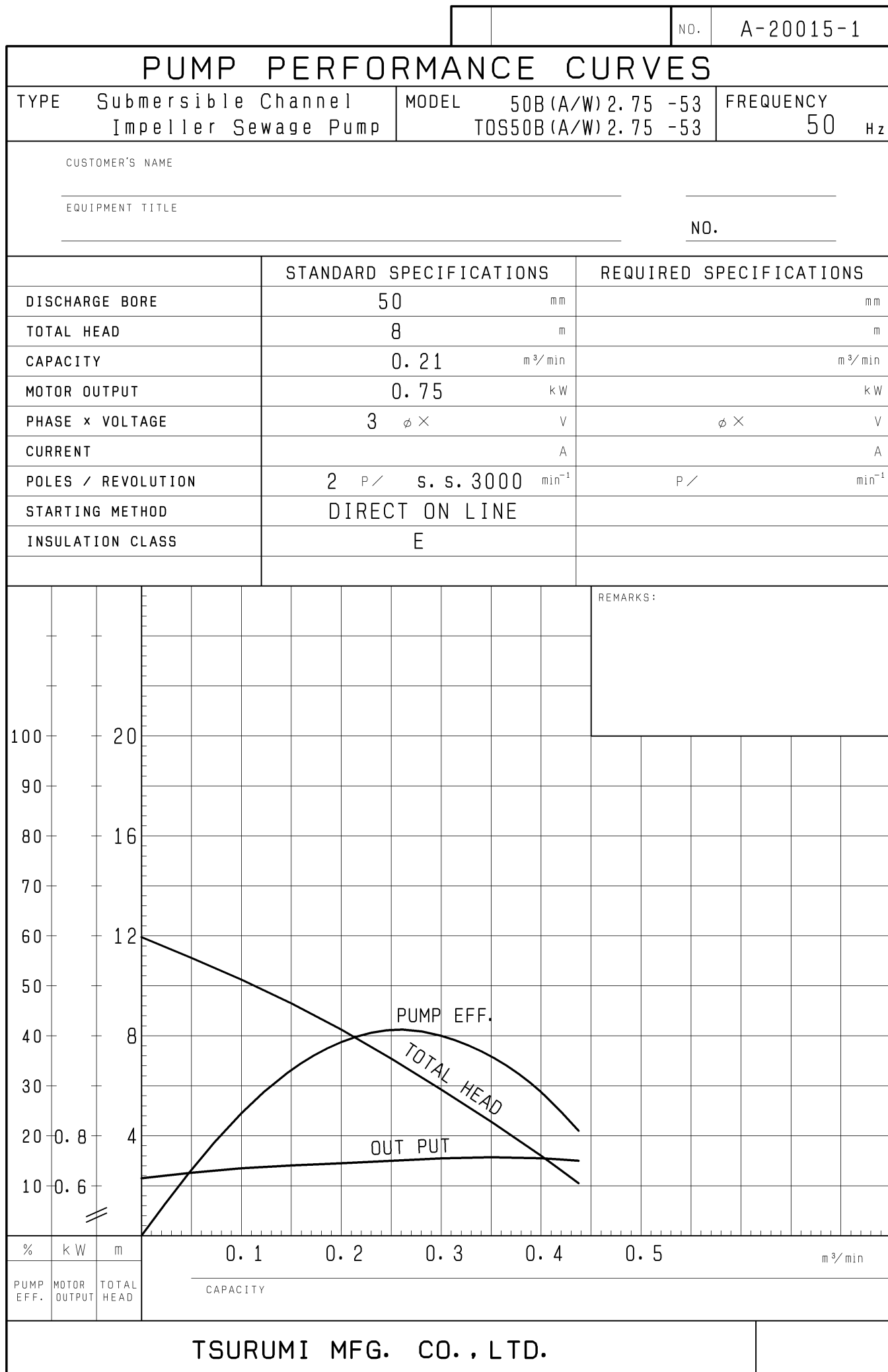


SPECIFICATIONS	Model	50B2.75	B-series	
			0.75kW, 3-phase	
Type of Pump Submersible cast iron pump suitable for pumping sewage, wastewater, storm water, etc.		Impeller Semi-open single-channel impeller for solid-handling design, dynamically balanced		
Type of Fluid Sewage, wastewater, and water carrying solid matters		Solids Passage 50Hz – 45 × 20mm 60Hz – 51 × 23mm		
Temperature: 0 to 40°C (High temperature model available on special request)		Cable Entry with Anti-Wicking Block Watertight cable entry with strain-relief device. The anti-wicking block prevents water incursion due to capillary action should the power cable be damaged or the end submerged.		
Discharge Bore 50mm		Bearings Permanently lubricated, deep-groove, double-shielded C3 ball bearings		
Motor Output 0.75kW		Shaft 420 stainless steel		
Power Supply Three-phase		Shaft Seal (Mechanical Seal) Furnished with a double-face mechanical seal located in oil chamber. Both upper and lower seal faces always run in a clean environment.		
Starting Method Direct on Line		Upper Seal Faces: Ceramic + Carbon Lower Seal Faces: SiC + SiC		
Motor Continuous-duty rated, dry-type induction motor		Oil Seal (Lip Seal) Used as a “Dust Seal”, it protects the mechanical seal from abrasive particles.		
Insulation Class: E (available in F on special request) Degree of Protection: IP68		OIL LIFTER (Patented) Equipped in oil chamber. It forcibly supplies lubricating oil to the mechanical seal and continues to supply the oil to the upper seal faces even if lubricant falls below the rated volume.		
No. of Poles & Speed (Synchronous Speed) 2-pole, 3000/3600min ⁻¹ (50/60Hz)		Type of Lubricating Oil & Volume Turbine Oil (ISO VG32), 440ml		
Power Supply Voltages & Rated Currents 50Hz 60Hz 380V – 1.9A 220V – 3.5A 400V – 1.9A 380V – 1.9A 415V – 2.0A 440V – 1.7A		Motor Protection Device A circle thermal protector built in the motor housing. Directly cuts the motor circuit if excessive heat builds up or an overcurrent condition occurs in the motor.		
Power Cable Sheath: PVC Standard Length: 6m 200 to 600V supply: 1 × 4 × 1.25mm ² , O.D. 11.1mm				
Dry Weight (excluding cable) Free Standing Type: 25kg Guide Rail Fitting Type: 24kg				
Optional Accessories				
Bend Set (Free Standing Type) • Discharge Bend • Screwed Flange		External Leakage Sensor		
TOS/TS Set (Guide Rail Fitting Type) • Duckfoot Bend • Guide Support • Guide Hook • Lifting Chain 5m (with Shackles) • JIS 10kg/cm ² Screwed Flange (TOS Set only)				
TSURUMI MANUFACTURING CO., LTD.				

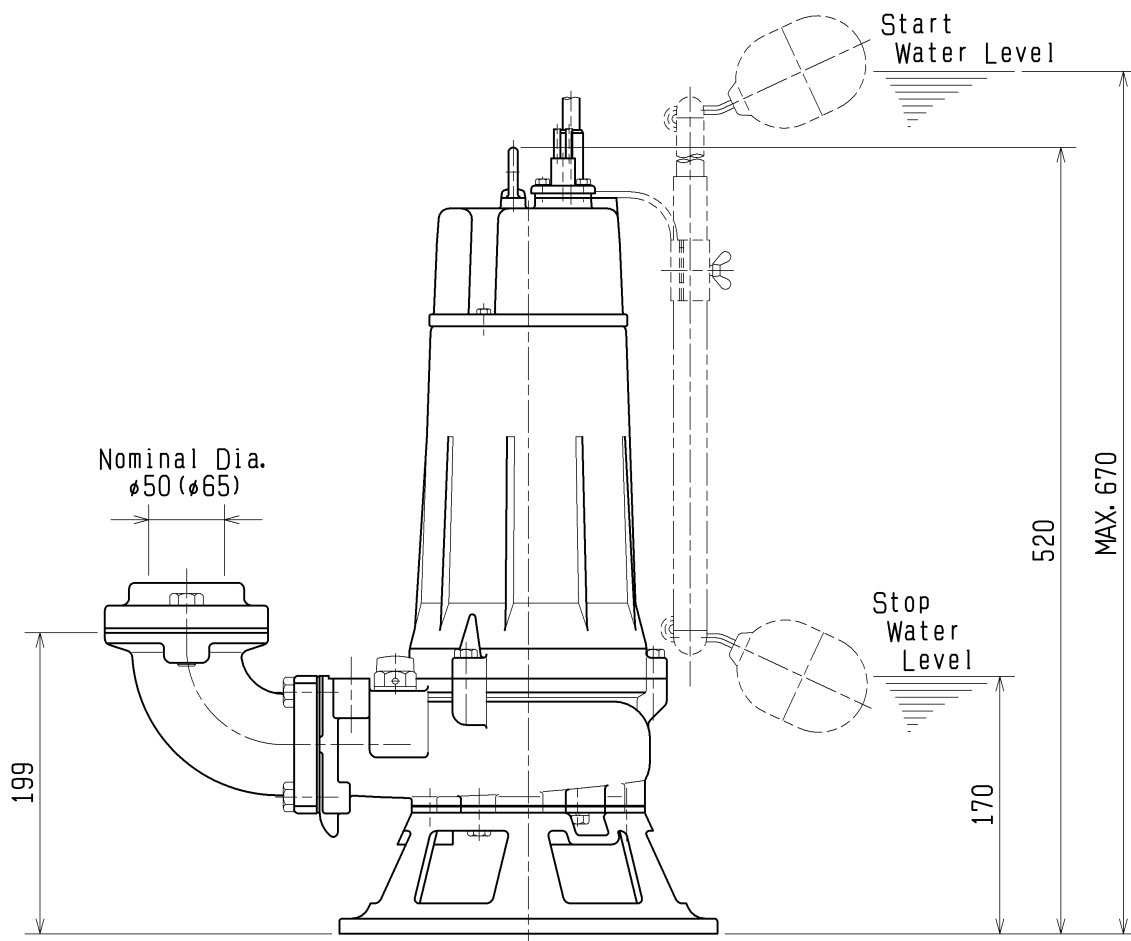
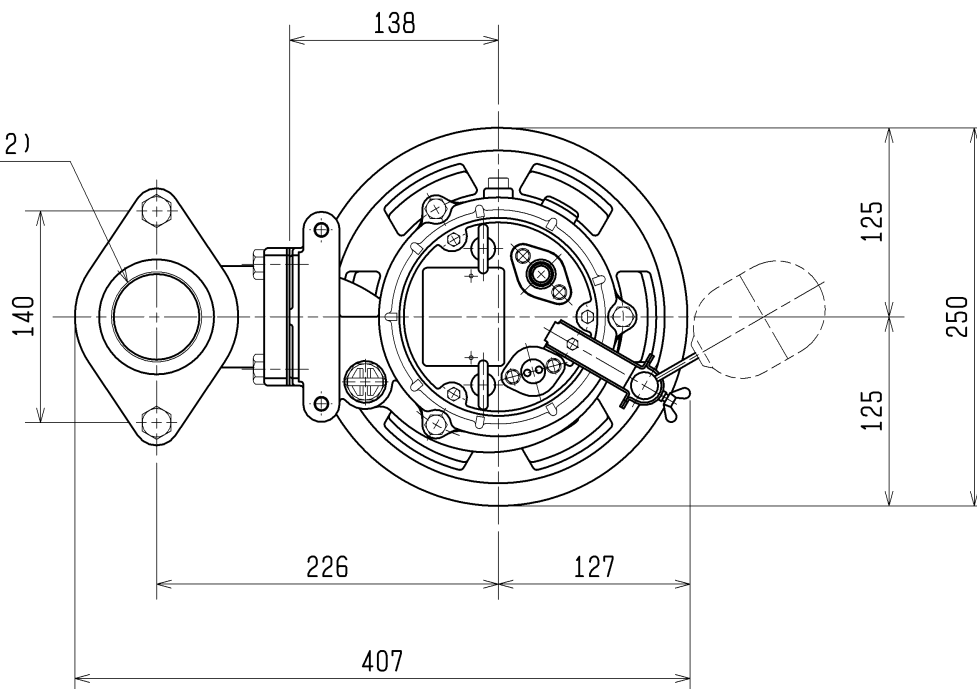


DIMENSION DRAWING		No.	No.
TYPE Submersible Channel Impeller Sewage Pump (Automatic)		MODEL	50BA2.75 -53/63

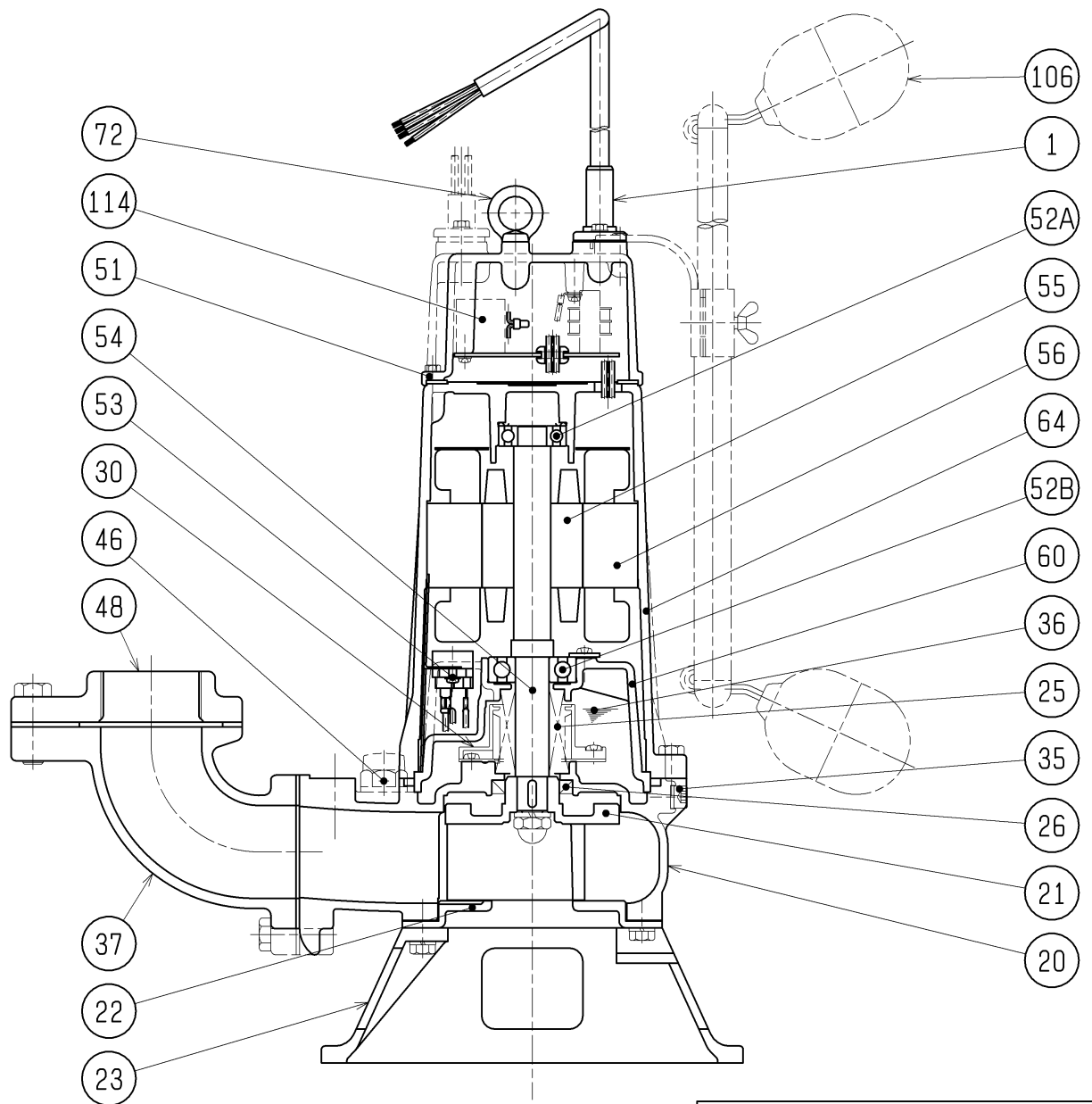
Approximate Weight(※)
26kg

※excluding cable

Rp2 (Rp2-1/2)



SECTIONAL DRAWING		No.	No.	A-20060-1
TYPE	Submersible Channel Impeller Sewage Pump (Automatic)	MODEL	50BA2.75 -53/63	



REQ. SPECIFICATION

No.	DESCRIPTION	Q'TY	MATERIAL / NOTE	No.	DESCRIPTION	Q'TY	MATERIAL / NOTE
1	Cable	1	PVC Sheath	51	Head Cover	1	Gray Iron Casting
20	Pump Casing	1	Gray Iron Casting	52A	Upper Bearing	1	6203ZZC3
21	Impeller	1	Gray Iron Casting	52B	Lower Bearing	1	6304ZZC3
22	Suction Cover	1	Gray Iron Casting	53	Motor Protector	1	
23	Strainer Stand	1	Gray Iron Casting	54	Shaft	1	Stainless Steel 420J2
25	Mechanical Seal	1	H-20A	55	Rotor	1	
26	Oil Seal	1	TC32488	56	Stator	1	
30	Oil Lifter	1	Plastic	60	Bearing Housing	1	Gray Iron Casting
35	Oil Plug	1	Stainless Steel 304	64	Motor Frame	1	Gray Iron Casting
36	Lubricant		Turbine Oil (ISO VG32)	72	Eye Bolt	2	Stainless Steel 304
37	Discharge Bend	1	Gray Iron Casting	106	Float	2	Plastic
46	Air Release Valve	1	Nylon	114	Relay Unit	1	
48	Screwed Flange	1	Gray Iron Casting				